

290060

R020225

SCAFCO® PERFORATED PLANK FLOOR SYSTEM INSTALLATION INSTRUCTIONS

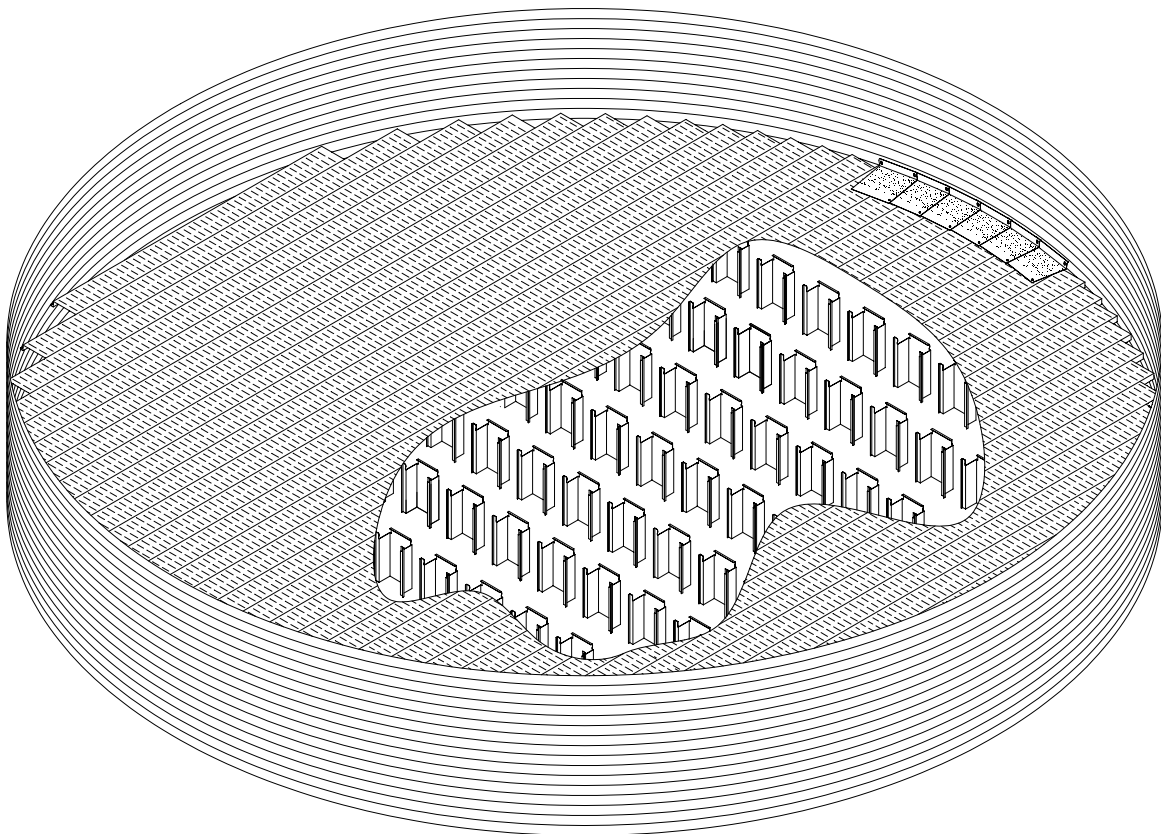




TABLE OF CONTENTS

TABLE OF CONTENTS.....	1
PERFORATED PLANK FLOOR INSTALLATION	2
AERATION FLOOR:.....	3
12 FT (3.66 M) DIAMETER BIN.....	4
15 FT (4.57 M) DIAMETER BIN.....	6
18 FT (5.49 M) DIAMETER BIN.....	8
21 FT (6.40 M) DIAMETER BIN.....	10
24 FT (7.32 M) DIAMETER BIN.....	12
27 FT (8.23 M) DIAMETER BIN.....	14
30 FT (9.15 M) DIAMETER BIN.....	16
33 FT (10.06 M) DIAMETER BIN.....	18
36 FT (10.97 M) DIAMETER BIN.....	20
39 FT (11.89 M) DIAMETER BIN.....	22
42 FT (12.80 M) DIAMETER BIN.....	24
48 FT (14.63 M) DIAMETER BIN.....	26



PERFORATED PLANK FLOOR INSTALLATION

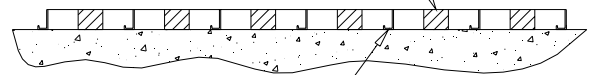
1. Start with shortest perforated plank. Install this plank perpendicular to the horizontal unloading tube. Install support legs (13" tall) under this plank as shown on the appropriate leg installation schedule. Be sure the bottom of each support leg is flat on the concrete floor.
2. The second floor plank interlocks with the first plank. Place the support legs as shown on the appropriate schedule (note that legs in second row are staggered from those in first row). After legs are in position, install second floor plank on support legs, interlocking with first plank. By pushing down on inside edge of plank, the two floor planks will snap into place.
3. Continue this procedure with remainder of floor. With longer floor planks, it may be necessary to snap planks together starting at one end, gradually moving to other end.
4. Floor systems for bins 42', 48' and larger will require two planks to span the diameter of the bin. Butt planks together, then install 4" wide perforated strip over butt joint. Use 12-14 x 3/4" self-drilling fasteners to connect perforated strip to floor plank. Use one self-drilling fastener per plank.
5. When all planks and support legs have been installed, begin attaching perimeter flashing to bin wall. Each flashing piece covers 9-3/8" and is bolted to bin wall with 5/16" dia. X 1 1/4" bolt, 5/16" washer and nut. Lap flashing same direction as sweep auger rotation. Fasten flashing to perforated planks with 12-14 x 3/4" self-drilling fasteners (one per flashing).

NOTE: Correct placement of floor support legs is required to ensure structural integrity and performance of perforated plank floor system. Failure to properly locate support legs will negate warranty on floor system.

AERATION FLOOR:

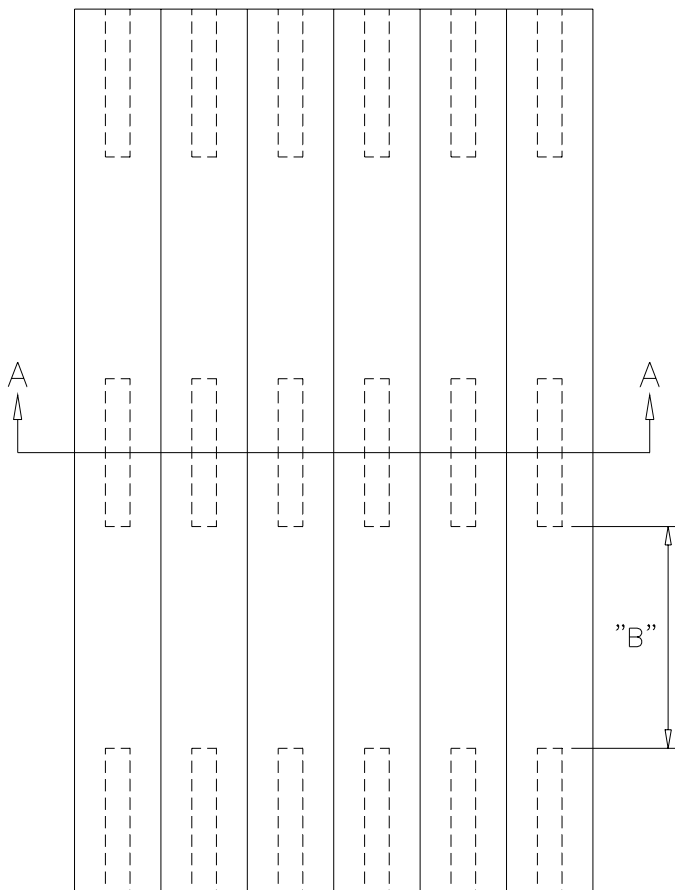
Plank sections installed directly on concrete floors must have intermediate wood supports, 2" x 2" x 12" blocks, under the fluted area of the plank. These blocks need not be fastened to the concrete or the plank. They **must**, however, be spaced according to the structure's eave height as indicated in the diagram and table below.

2" X 2" X 12" WOOD BLOCKS
(TYPICAL UNDER EACH PLANK)
SPACED ON "B" SPACING.



PLANK FLANGE MUST BEAR
ON CONCRETE FULL LENGTH
OF PLANK.

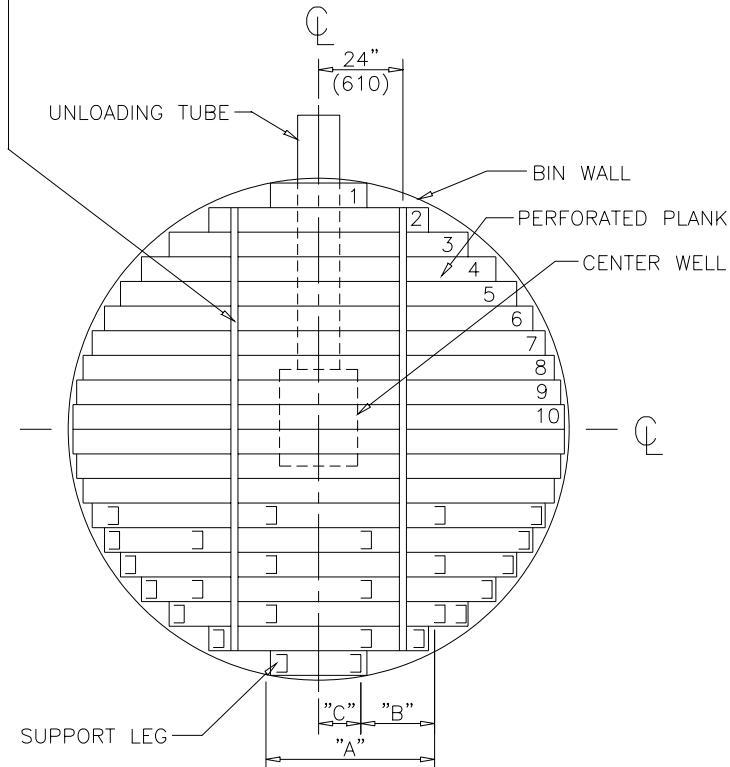
SECTION A-A



MAXIMUM EAVE HEIGHT	"B" SPACING
17' 10"	36"
21' 4"	34"
24' 11"	32"
32' 0"	30"
40' 0"	27"
48' 0"	24"
57' 0"	21"
64' 0"	18"

12 FT (3.66 M) DIAMETER BIN

2" (50 mm) WIDE X 18GA PLAIN STRIP
INSTALL AT 48" (1200 mm) O.C. PERPENDICULAR
TO PLANKS.
CONNECT TO EACH PLANK WITH
#12-14 X 3/4" (19 mm) SELF-DRILLING FASTENER.
(FOR BINS ABOVE 32 FT. (9.76 M) EAVE HEIGHT ONLY.)



NOTE:

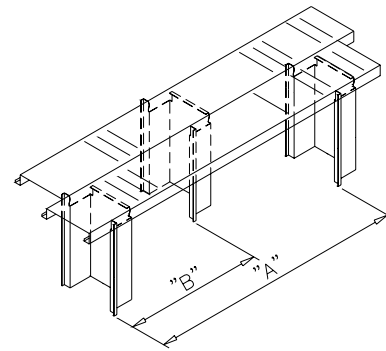
STAGGER LEGS IN EVERY OTHER ROW.

SEE LAYOUT AND TABLE A & B
FOR PROPER LEG SPACING.

SUPPORT LEG NOT TO BE OVER 6"
(150 mm) FROM END OF ANY PLANK.

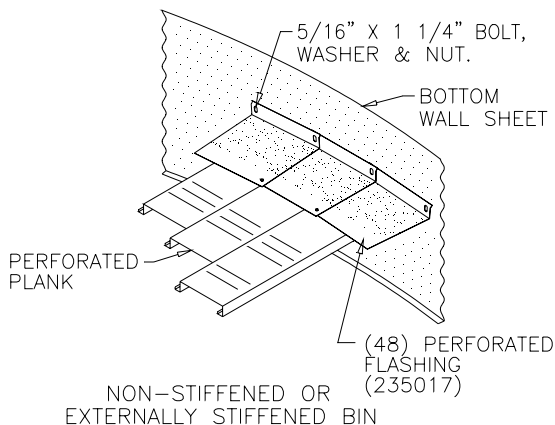
INSTALL PLANKS PERPENDICULAR TO
UNLOADING TUBE.

CONTRACTOR TO FIELD CUT PERFORATED
PLANKS, BUILD TRANSITION AROUND
BIN WELL AND SEAL AS REQUIRED.

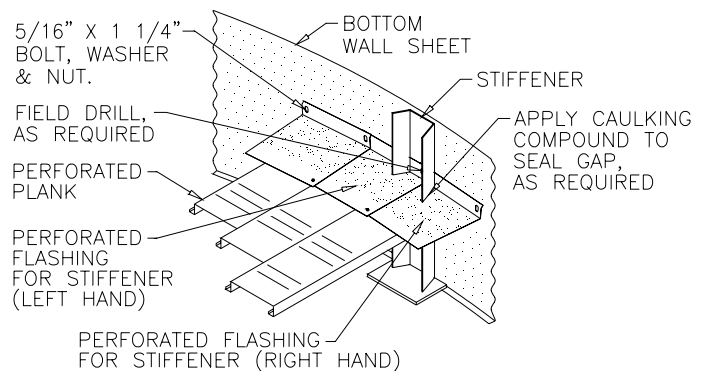


SUPPORT LEG DETAIL

INSTALL SUPPORT LEGS ON
SPACINGS SHOWN IN TABLE B.



NON-STIFFENED OR
EXTERNALLY STIFFENED BIN



INTERNALLY STIFFENED BIN

FLASHING DETAIL

LAP FLASHING SAME DIRECTION AS SWEEP AUGER ROTATION.
CONNECT EACH FLASHING TO BIN WALL WITH 5/16" X 1 1/4"
(8 X 32 mm) BOLTS.
FASTEN FLASHING TO PLANK WITH #12-14 X 3/4" (19 mm)
SELF-DRILLING FASTENERS (ONE PER FLASHING).

12 FT (3.66 M) DIAMETER BIN

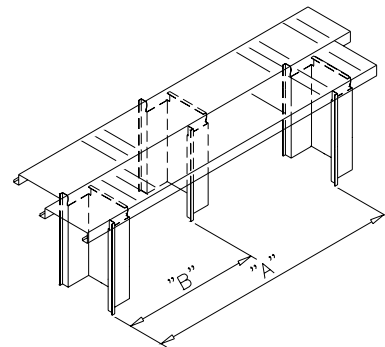
TABLE "A"

Plank No.	Plank Length		SUPPORT LEGS							
	(ft-in.)	(mm)								
1	2' 3"	686	2	2	2	2	2	2	2	2
2	5' 2"	1575	3	3	3	3	3	3	3	4
3	7' 1"	2159	3	3	3	4	4	4	4	4
4	8' 4"	2540	3	4	4	4	4	4	4	5
5	9' 4"	2845	4	4	4	4	4	5	5	5
6	10' 2"	3099	4	4	4	4	5	5	5	6
7	10' 9"	3277	4	4	4	4	5	5	5	6
8	11' 2"	3404	6	6	6	7	7	7	7	8
9	11' 5"	3480	6	6	6	7	7	7	8	8
10	11' 7"	3531	6	6	6	7	7	7	8	8
TOTALS (Includes both halves)			82	84	84	92	96	98	102	112
Bin Eave Height			17' 10"	21' 4"	24' 11"	32' 0"	40' 0"	48' 0"	57' 0"	64' 0"

TABLE "B"

Bin Eave Height		"A"		"B"		"C"		No. of 42-2/3" Rings
		(in.)	(mm)	(in.)	(mm)	(in.)	(mm)	
17' 10"	5.43 m	60	1524	30	762	15	381	5
21' 4"	6.50 m	56	1422	28	711	14	356	6
24' 11"	7.60 m	52	1321	26	660	13	330	7
32' 0"	9.75 m	48	1219	24	610	12	305	9
40' 0"	12.19 m	44	1118	22	559	11	279	11-1/3
48' 0"	14.63 m	40	1016	20	508	10	254	13-1/2
57' 0"	17.37 m	36	914	18	457	9	229	16
64' 0"	19.51 m	30	762	15	381	7 1/2	191	18

CONTRACTOR TO FIELD CUT PERFORATED
PLANKS, BUILD TRANSITION AROUND
BIN WELL AND SEAL AS REQUIRED.



5/16" X 1 1/4" BOLT, WASHER & NUT.

FIELD DRILL, AS REQUIRED

PERFORATED PLANK

PERFORATED FLASHING FOR STIFFENER (LEFT HAND)

PERFORATED FLASHING FOR STIFFENER (RIGHT HAND)

BOTTOM WALL SHEET

STIFFENER

APPLY CAULKING COMPOUND TO SEAL GAP, AS REQUIRED

INTERNALLY STIFFENED BIN

15 FT (4.57 M) DIAMETER BIN

TABLE "A"

Plank No.	Plank Length		SUPPORT LEGS							
	(ft-in.)	(mm)								
1	2' 11"	889	2	2	2	2	2	2	2	2
2	6' 0"	1829	3	3	3	3	3	4	4	4
3	8' 1"	2464	3	4	4	4	4	4	4	5
4	9' 8"	2946	4	4	4	4	4	5	5	5
5	10' 10"	3302	4	4	4	4	5	5	5	6
6	11' 9"	3581	4	4	5	5	5	5	6	6
7	12' 7"	3835	4	4	5	5	5	5	6	7
8	13' 2"	4013	4	5	5	5	5	6	6	7
9	13' 8"	4166	5	5	5	5	5	6	6	7
10	14' 1"	4293	7	7	7	7	8	8	8	9
11	14' 4"	4369	7	7	7	7	8	8	8	9
12	14' 7"	4445	7	7	7	7	8	8	8	9
13	14' 8"	4470	7	7	7	7	8	8	9	9
TOTALS (Includes both halves)			115	119	123	123	132	140	145	161
Bin Eave Height			17' 10"	21' 4"	24' 11"	32' 0"	40' 0"	48' 0"	57' 0"	64' 0"

TABLE "B"

Bin Eave Height		"A"		"B"		"C"		No. of 42-2/3" Rings
		(in.)	(mm)	(in.)	(mm)	(in.)	(mm)	
17' 10"	5.43 m	60	1524	30	762	15	381	5
21' 4"	6.50 m	56	1422	28	711	14	356	6
24' 11"	7.60 m	52	1321	26	660	13	330	7
32' 0"	9.75 m	48	1219	24	610	12	305	9
40' 0"	12.19 m	44	1118	22	559	11	279	11-1/3
48' 0"	14.63 m	40	1016	20	508	10	254	13-1/2
57' 0"	17.37 m	36	914	18	457	9	229	16
64' 0"	19.51 m	30	762	15	381	7 1/2	191	18

18 FT (5.49 M) DIAMETER BIN

2" (50 mm) WIDE X 18GA PLAIN STRIP
INSTALL AT 48" (1200 mm) O.C. PERPENDICULAR
TO PLANKS.
CONNECT TO EACH PLANK WITH
#12-14 X 3/4" (19 mm) SELF-DRILLING FASTENER.
(FOR BINS ABOVE 32 FT. (9.76 M) EAVE HEIGHT ONLY.)

NOTE:

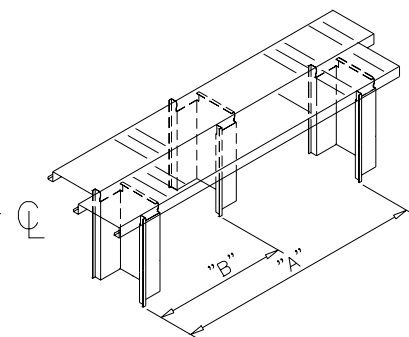
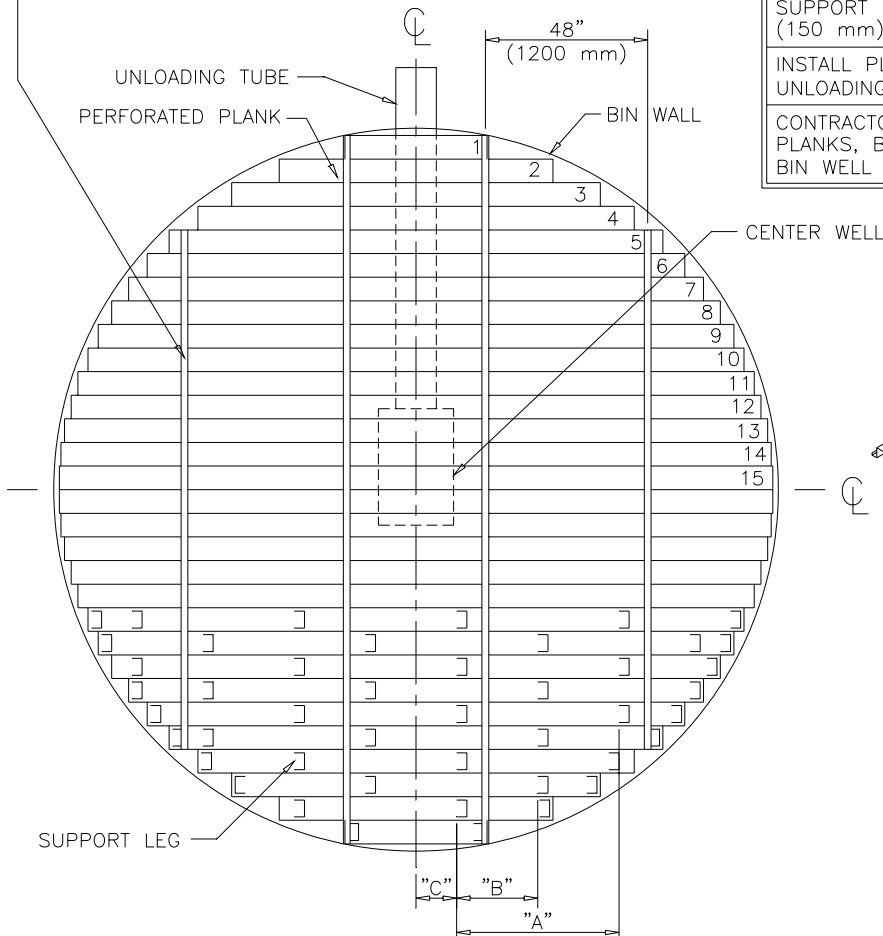
STAGGER LEGS IN EVERY OTHER ROW.

SEE LAYOUT AND TABLE A & B
FOR PROPER LEG SPACING.

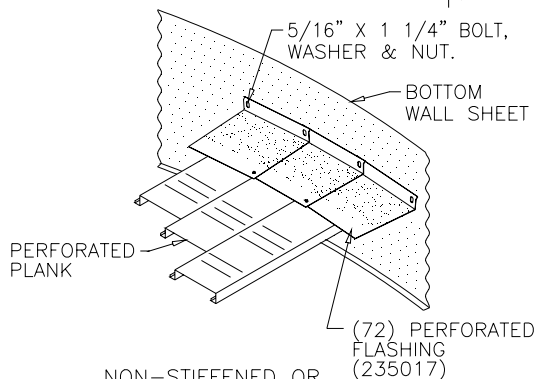
SUPPORT LEG NOT TO BE OVER 6"
(150 mm) FROM END OF ANY PLANK.

INSTALL PLANKS PERPENDICULAR TO
UNLOADING TUBE.

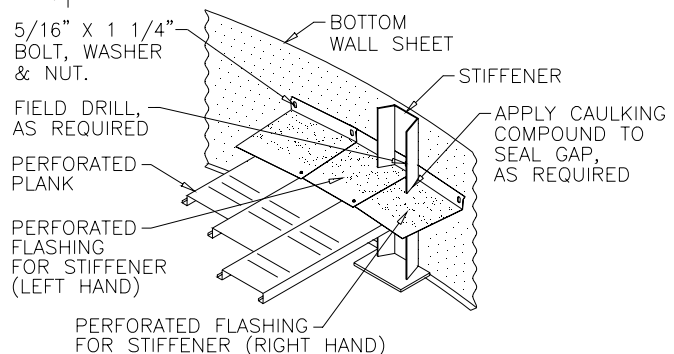
CONTRACTOR TO FIELD CUT PERFORATED
PLANKS, BUILD TRANSITION AROUND
BIN WELL AND SEAL AS REQUIRED.



SUPPORT LEG DETAIL
INSTALL SUPPORT LEGS ON
SPACINGS SHOWN IN TABLE B.



**NON-STIFFENED OR
EXTERNALLY STIFFENED BIN**



INTERNALLY STIFFENED BIN

FLASHING DETAIL

LAP FLASHING SAME DIRECTION AS SWEEP AUGER ROTATION.
CONNECT EACH FLASHING TO BIN WALL WITH 5/16" X 1 1/4"
(8 X 32 mm) BOLTS.
FASTEN FLASHING TO PLANK WITH #12-14 X 3/4" (19 mm)
SELF-DRILLING FASTENERS (ONE PER FLASHING).

18 FT (5.49 M) DIAMETER BIN

TABLE "A"

Plank No.	Plank Length		SUPPORT LEGS							
	(ft-in.)	(mm)								
1	3' 6"	1067	2	2	2	2	2	2	2	2
2	6' 9"	2057	3	3	3	3	4	4	4	4
3	9' 1"	2769	4	4	4	4	4	4	5	5
4	10' 9"	3277	4	4	4	4	5	5	5	6
5	12' 2"	3708	4	4	5	5	5	5	6	6
6	13' 3"	4039	4	5	5	5	5	6	6	7
7	14' 2"	4318	5	5	5	5	6	6	6	7
8	15' 0"	4572	5	5	5	6	6	6	7	8
9	15' 8"	4775	5	5	5	6	6	6	7	8
10	16' 2"	4928	5	5	6	6	6	7	7	8
11	16' 8"	5080	5	5	6	6	6	7	7	8
12	17' 0"	5182	7	7	8	8	8	9	9	10
13	17' 4"	5283	7	8	8	8	8	9	9	11
14	17' 6"	5334	7	8	8	8	9	9	10	11
15	17' 7"	5359	7	8	8	8	9	9	10	11
TOTALS (Includes both halves)			148	156	164	168	178	188	200	224
Bin Eave Height			17' 10"	21' 4"	24' 11"	32' 0"	40' 0"	48' 0"	57' 0"	64' 0"

TABLE "B"

Bin Eave Height		"A"		"B"		"C"		No. of 42-2/3" Rings
		(in.)	(mm)	(in.)	(mm)	(in.)	(mm)	
17' 10"	5.43 m	60	1524	30	762	15	381	5
21' 4"	6.50 m	56	1422	28	711	14	356	6
24' 11"	7.60 m	52	1321	26	660	13	330	7
32' 0"	9.75 m	48	1219	24	610	12	305	9
40' 0"	12.19 m	44	1118	22	559	11	279	11-1/3
48' 0"	14.63 m	40	1016	20	508	10	254	13-1/2
57' 0"	17.37 m	36	914	18	457	9	229	16
64' 0"	19.51 m	30	762	15	381	7 1/2	191	18

21 FT (6.40 M) DIAMETER BIN

2" (50 mm) WIDE X 18GA PLAIN STRIP
INSTALL AT 48" (1200 mm) O.C. PERPENDICULAR
TO PLANKS.
CONNECT TO EACH PLANK WITH
#12-14 X 3/4" (19 mm) SELF-DRILLING FASTENER.
(FOR BINS ABOVE 32 FT. (9.76 M) EAVE HEIGHT ONLY.)

NOTE:

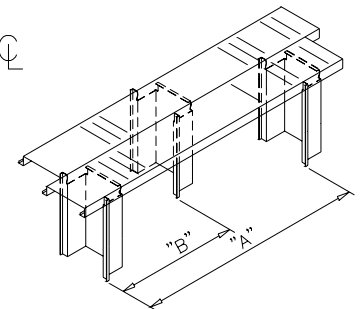
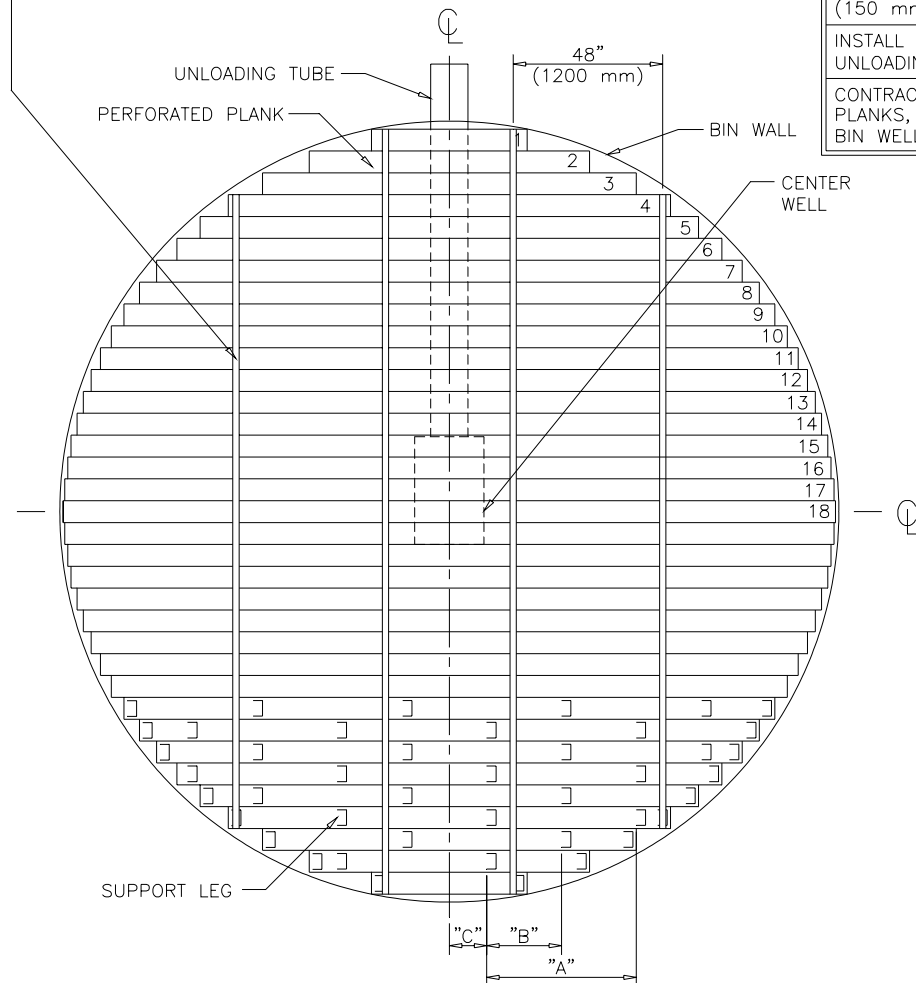
STAGGER LEGS IN EVERY OTHER ROW.

SEE LAYOUT AND TABLE A & B
FOR PROPER LEG SPACING.

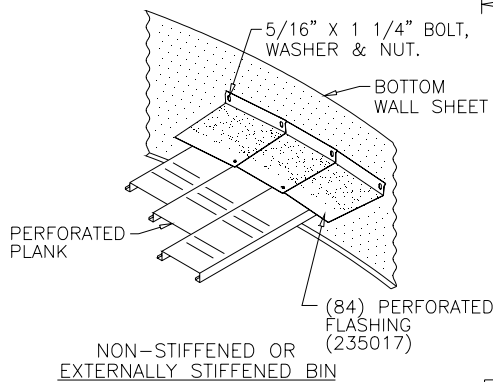
SUPPORT LEG NOT TO BE OVER 6"
(150 mm) FROM END OF ANY PLANK.

INSTALL PLANKS PERPENDICULAR TO
UNLOADING TUBE.

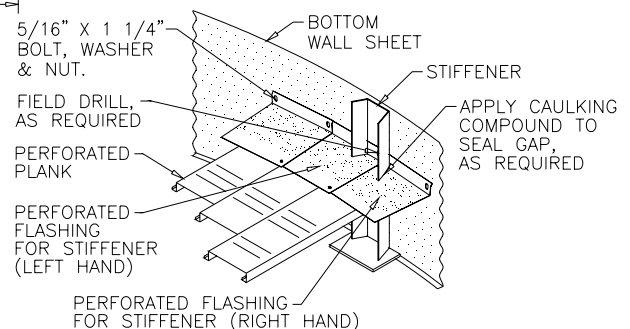
CONTRACTOR TO FIELD CUT PERFORATED
PLANKS, BUILD TRANSITION AROUND
BIN WELL AND SEAL AS REQUIRED.



SUPPORT LEG DETAIL
INSTALL SUPPORT LEGS ON
SPACINGS SHOWN IN TABLE B.



**NON-STIFFENED OR
EXTERNALLY STIFFENED BIN**



INTERNALLY STIFFENED BIN

FLASHING DETAIL

LAP FLASHING SAME DIRECTION AS SWEEP AUGER ROTATION.
CONNECT EACH FLASHING TO BIN WALL WITH 5/16" X 1 1/4"
(8 X 32 mm) BOLTS.
FASTEN FLASHING TO PLANK WITH #12-14 X 3/4" (19 mm)
SELF-DRILLING FASTENERS (ONE PER FLASHING).

21 FT (6.40 M) DIAMETER BIN

TABLE "A"

Plank No.	Plank Length		SUPPORT LEGS							
	(ft-in.)	(mm)								
1	4' 2"	1270	2	2	2	2	2	2	4	4
2	7' 6"	2286	3	3	4	4	4	4	4	5
3	10' 0"	3048	4	4	4	4	4	5	5	6
4	11' 10"	3607	4	4	5	5	5	5	6	6
5	13' 4"	4064	4	5	5	5	5	6	6	7
6	14' 7"	4445	5	5	5	5	6	6	7	7
7	15' 8"	4775	5	5	5	6	6	6	7	8
8	16' 7"	5055	5	5	6	6	6	7	7	8
9	17' 5"	5309	5	6	6	6	6	7	7	9
10	18' 1"	5512	5	6	6	6	7	7	8	9
11	18' 8"	5690	6	6	6	6	7	7	8	9
12	19' 2"	5842	6	6	6	7	7	7	8	9
13	19' 7"	5969	6	6	6	7	7	8	8	9
14	19' 11"	6071	6	6	6	7	7	8	8	10
15	20' 3"	6172	8	8	8	9	9	10	10	12
16	20' 5"	6223	8	8	8	9	9	10	10	12
17	20' 7"	6274	8	8	9	9	9	10	11	12
18	20' 8"	6299	8	8	9	9	9	10	11	12
TOTALS (Includes both halves)			188	194	203	215	221	240	259	296
Bin Eave Height			17' 10"	21' 4"	24' 11"	32' 0"	40' 0"	48' 0"	57' 0"	64' 0"

TABLE "B"

Bin Eave Height		"A"		"B"		"C"		No. of 42-2/3" Rings
		(in.)	(mm)	(in.)	(mm)	(in.)	(mm)	
17' 10"	5.43 m	60	1524	30	762	15	381	5
21' 4"	6.50 m	56	1422	28	711	14	356	6
24' 11"	7.60 m	52	1321	26	660	13	330	7
32' 0"	9.75 m	48	1219	24	610	12	305	9
40' 0"	12.19 m	44	1118	22	559	11	279	11-1/3
48' 0"	14.63 m	40	1016	20	508	10	254	13-1/2
57' 0"	17.37 m	36	914	18	457	9	229	16
64' 0"	19.51 m	30	762	15	381	7 1/2	191	18

24 FT (7.32 M) DIAMETER BIN

2" (50 mm) WIDE X 18GA PLAIN STRIP
INSTALL AT 48" (1200 mm) O.C. PERPENDICULAR
TO PLANKS.
CONNECT TO EACH PLANK WITH
#12-14 X 3/4" (19 mm) SELF-DRILLING FASTENER.
(FOR BINS ABOVE 32 FT. (9.76 M) EAVE HEIGHT ONLY.)

NOTE:

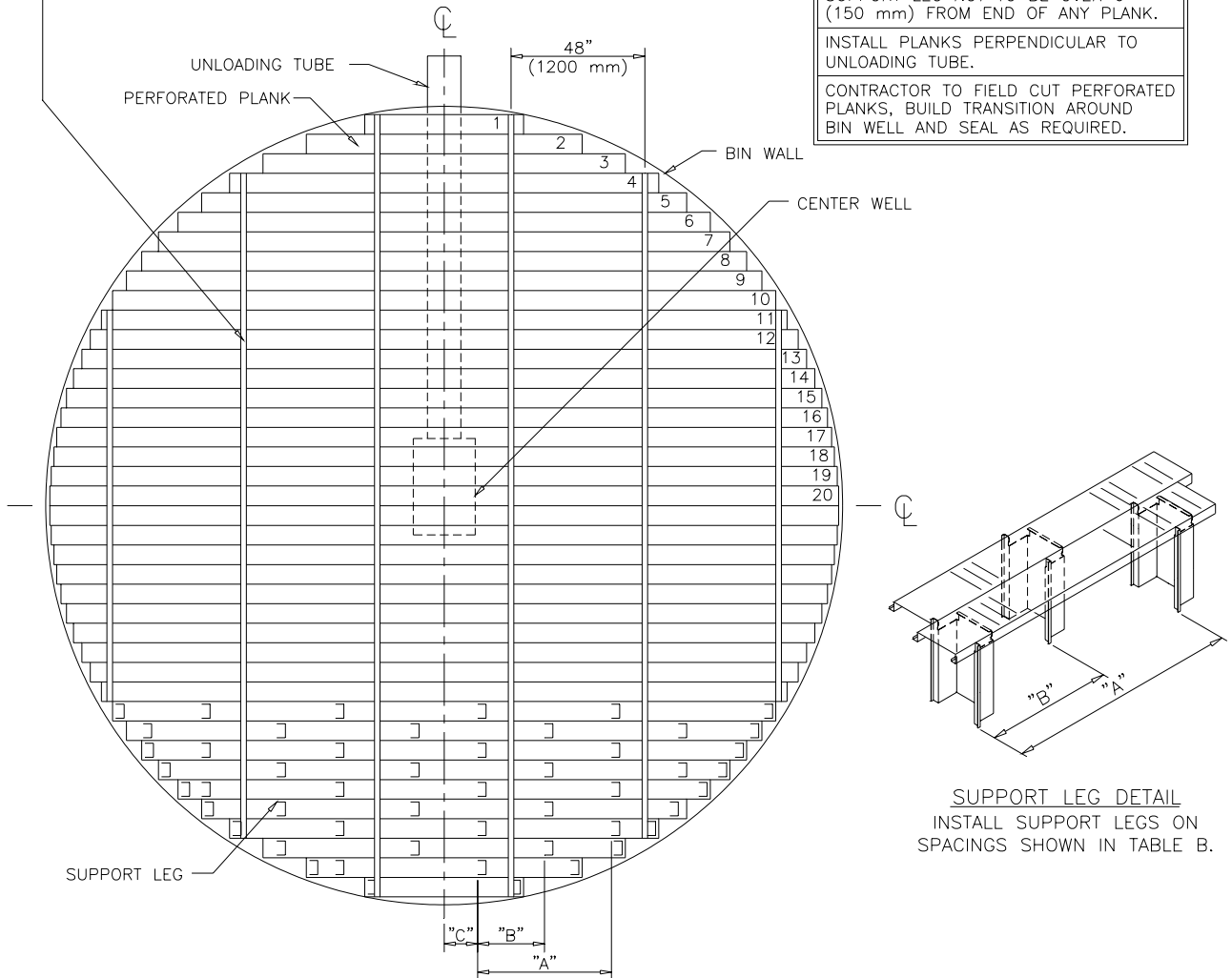
STAGGER LEGS IN EVERY OTHER ROW.

SEE LAYOUT AND TABLE A & B
FOR PROPER LEG SPACING.

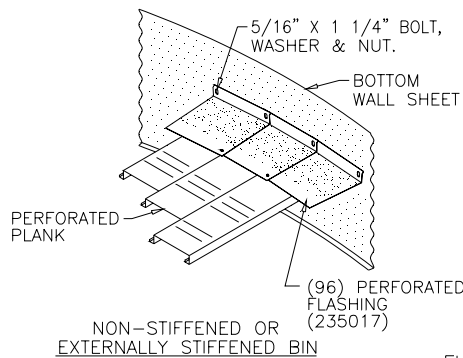
SUPPORT LEG NOT TO BE OVER 6"
(150 mm) FROM END OF ANY PLANK.

INSTALL PLANKS PERPENDICULAR TO
UNLOADING TUBE.

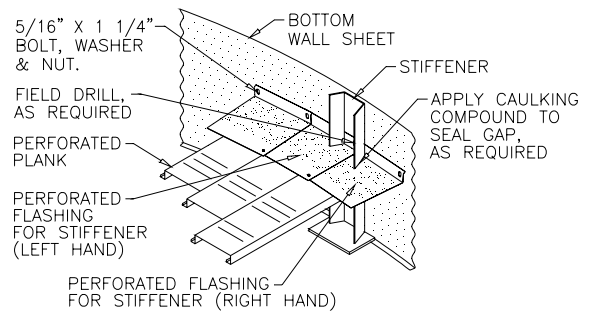
CONTRACTOR TO FIELD CUT PERFORATED
PLANKS, BUILD TRANSITION AROUND
BIN WELL AND SEAL AS REQUIRED.



SUPPORT LEG DETAIL
INSTALL SUPPORT LEGS ON
SPACINGS SHOWN IN TABLE B.



FLASHING DETAIL
NON-STIFFENED OR
EXTERNALLY STIFFENED BIN



INTERNALLY STIFFENED BIN

LAP FLASHING SAME DIRECTION AS SWEEP AUGER ROTATION.
CONNECT EACH FLASHING TO BIN WALL WITH 5/16" X 1 1/4"
(8 X 32 mm) BOLTS.
FASTEN FLASHING TO PLANK WITH #12-14 X 3/4" (19 mm)
SELF-DRILLING FASTENERS (ONE PER FLASHING).

24 FT (7.32 M) DIAMETER BIN

TABLE "A"

Plank No.	Plank Length		SUPPORT LEGS							
	(ft-in.)	(mm)								
1	4' 9"	1448	2	2	2	2	4	4	4	4
2	8' 3"	2515	3	4	4	4	4	4	4	5
3	10' 10"	3302	4	4	4	4	5	5	5	6
4	12' 10"	3912	4	4	5	5	5	6	6	7
5	14' 6"	4420	5	5	5	5	6	6	7	7
6	15' 11"	4851	5	5	5	6	6	6	7	8
7	17' 1"	5207	5	5	6	6	6	7	7	8
8	18' 1"	5512	5	6	6	6	7	7	8	9
9	19' 0"	5791	6	6	6	7	7	7	8	9
10	19' 10"	6045	6	6	6	7	7	8	8	10
11	20' 6"	6248	6	6	6	7	7	8	9	10
12	21' 2"	6452	6	6	6	7	8	8	9	10
13	21' 8"	6604	6	6	7	7	8	8	9	10
14	22' 2"	6756	6	6	7	7	8	8	9	10
15	22' 7"	6883	6	6	7	7	8	8	9	11
16	22' 11"	6985	6	7	7	7	8	9	9	11
17	23' 2"	7061	8	9	9	10	10	11	11	13
18	23' 4"	7112	8	9	9	10	10	11	11	13
19	23' 6"	7163	9	9	9	10	10	11	12	13
20	23' 7"	7188	9	9	9	10	10	11	12	13
TOTALS (Includes both halves)			230	240	250	268	288	306	328	374
Bin Eave Height			17' 10"	21' 4"	24' 11"	32' 0"	40' 0"	48' 0"	57' 0"	64' 0"

TABLE "B"

Bin Eave Height		"A"		"B"		"C"		No. of 42-2/3" Rings
		(in.)	(mm)	(in.)	(mm)	(in.)	(mm)	
17' 10"	5.43 m	60	1524	30	762	15	381	5
21' 4"	6.50 m	58	1473	29	737	14 1/2	368	6
24' 11"	7.60 m	54	1372	27	686	13 1/2	343	7
32' 0"	9.75 m	48	1219	24	610	12	305	9
40' 0"	12.19 m	44	1118	22	559	11	279	11-1/3
48' 0"	14.63 m	40	1016	20	508	10	254	13-1/2
57' 0"	17.37 m	36	914	18	457	9	229	16
64' 0"	19.51 m	30	762	15	381	7 1/2	191	18

27 FT (8.23 M) DIAMETER BIN

2" (50 mm) WIDE X 18GA PLAIN STRIP
INSTALL AT 48" (1200 mm) O.C. PERPENDICULAR
TO PLANKS.
CONNECT TO EACH PLANK WITH
#12-14 X 3/4" (19 mm) SELF-DRILLING FASTENER.
(FOR BINS ABOVE 32 FT. (9.76 M) EAVE HEIGHT ONLY.)

NOTE:

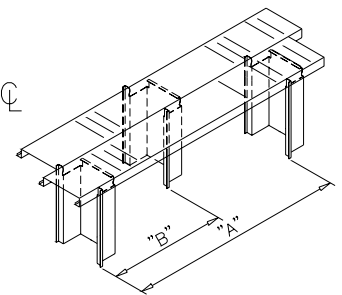
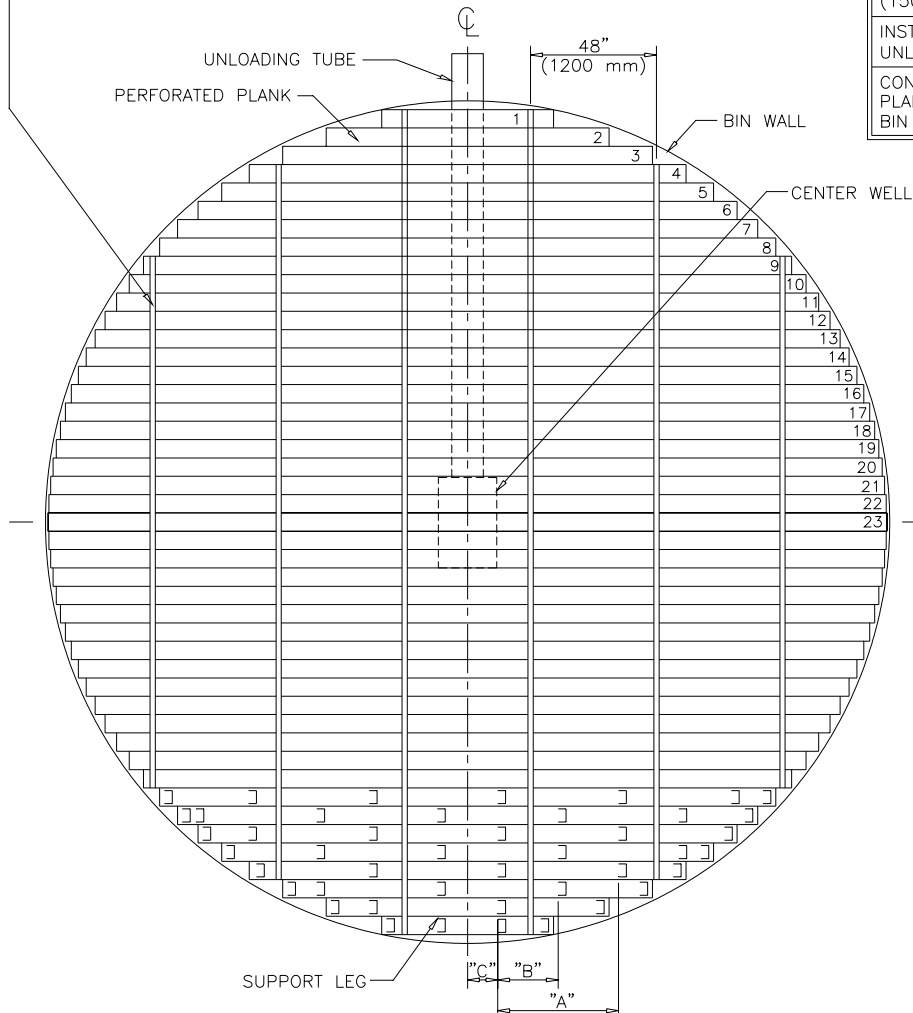
STAGGER LEGS IN EVERY OTHER ROW.

SEE LAYOUT AND TABLE A & B
FOR PROPER LEG SPACING.

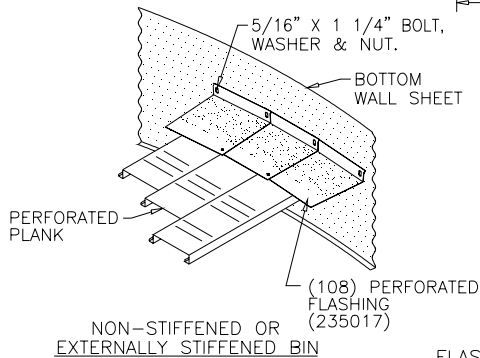
SUPPORT LEG NOT TO BE OVER 6"
(150 mm) FROM END OF ANY PLANK.

INSTALL PLANKS PERPENDICULAR TO
UNLOADING TUBE.

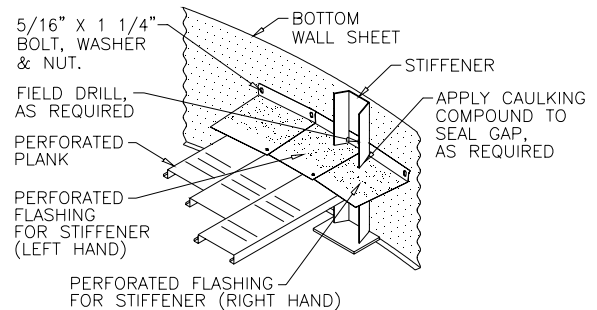
CONTRACTOR TO FIELD CUT PERFORATED
PLANKS, BUILD TRANSITION AROUND
BIN WELL AND SEAL AS REQUIRED.



SUPPORT LEG DETAIL
INSTALL SUPPORT LEGS ON
SPACINGS SHOWN IN TABLE B.



**NON-STIFFENED OR
EXTERNALLY STIFFENED BIN**



INTERNALLY STIFFENED BIN

FLASHING DETAIL

LAP FLASHING SAME DIRECTION AS SWEEP AUGER ROTATION.
CONNECT EACH FLASHING TO BIN WALL WITH 5/16" X 1 1/4"
(8 X 32 mm) BOLTS.
FASTEN FLASHING TO PLANK WITH #12-14 X 3/4" (19 mm)
SELF-DRILLING FASTENERS (ONE PER FLASHING).

27 FT (8.23 M) DIAMETER BIN

TABLE "A"

Plank No.	Plank Length		SUPPORT LEGS							
	(ft-in.)	(mm)								
1	5' 5"	1651	2	2	4	4	4	4	4	4
2	8' 11"	2718	4	4	4	4	4	5	5	5
3	11' 8"	3556	4	4	5	5	5	5	6	6
4	13' 10"	4216	5	5	5	5	6	6	6	7
5	15' 7"	4750	5	5	6	6	6	7	7	8
6	17' 1"	5207	5	6	6	6	7	7	7	8
7	18' 5"	5613	6	6	6	7	7	8	8	9
8	19' 6"	5944	6	6	6	7	7	8	8	9
9	20' 7"	6274	6	6	7	7	8	8	9	10
10	21' 5"	6528	6	7	7	7	8	8	9	10
11	22' 3"	6782	6	7	7	8	8	9	9	11
12	23' 0"	7010	7	7	7	8	8	9	9	11
13	23' 7"	7188	7	7	7	8	8	9	10	11
14	24' 2"	7366	7	7	8	8	9	9	10	11
15	24' 8"	7518	7	7	8	8	9	9	10	11
16	25' 1"	7645	7	7	8	8	9	10	10	12
17	25' 6"	7772	7	7	8	8	9	10	10	12
18	25' 10"	7874	7	8	8	8	9	10	10	12
19	26' 1"	7950	7	8	8	9	9	10	10	12
20	26' 3"	8001	9	10	10	11	11	12	12	14
21	26' 5"	8052	9	10	10	11	11	12	13	14
22	26' 7"	8103	9	10	10	11	11	12	13	14
23	26' 7"	8103	9	10	10	11	11	12	13	14
TOTALS (Includes both halves)			285	302	320	339	357	386	403	456
Bin Eave Height			17' 10"	21' 4"	24' 11"	32' 0"	40' 0"	48' 0"	57' 0"	64' 0"

TABLE "B"

Bin Eave Height		"A"		"B"		"C"		No. of 42-2/3" Rings
		(in.)	(mm)	(in.)	(mm)	(in.)	(mm)	
17' 10"	5.43 m	58	1473	29	737	14 1/2	368	5
21' 4"	6.50 m	54	1372	27	686	13 1/2	343	6
24' 11"	7.60 m	50	1270	25	635	12 1/2	318	7
32' 0"	9.75 m	46	1168	23	584	11 1/2	292	9
40' 0"	12.19 m	42	1067	21	533	10 1/2	267	11-1/3
48' 0"	14.63 m	38	965	19	483	9 1/2	241	13-1/2
57' 0"	17.37 m	36	914	18	457	9	229	16
64' 0"	19.51 m	30	762	15	381	7 1/2	191	18

30 FT (9.15 M) DIAMETER BIN

2" (50 mm) WIDE X 18GA PLAIN STRIP
INSTALL AT 48" (1200 mm) O.C. PERPENDICULAR
TO PLANKS.
CONNECT TO EACH PLANK WITH
#12-14 X 3/4" (19 mm) SELF-DRILLING FASTENER.
(FOR BINS ABOVE 32 FT. (9.76 M) EAVE HEIGHT ONLY.)

NOTE:

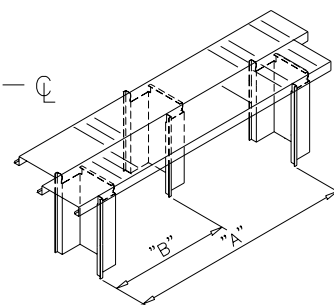
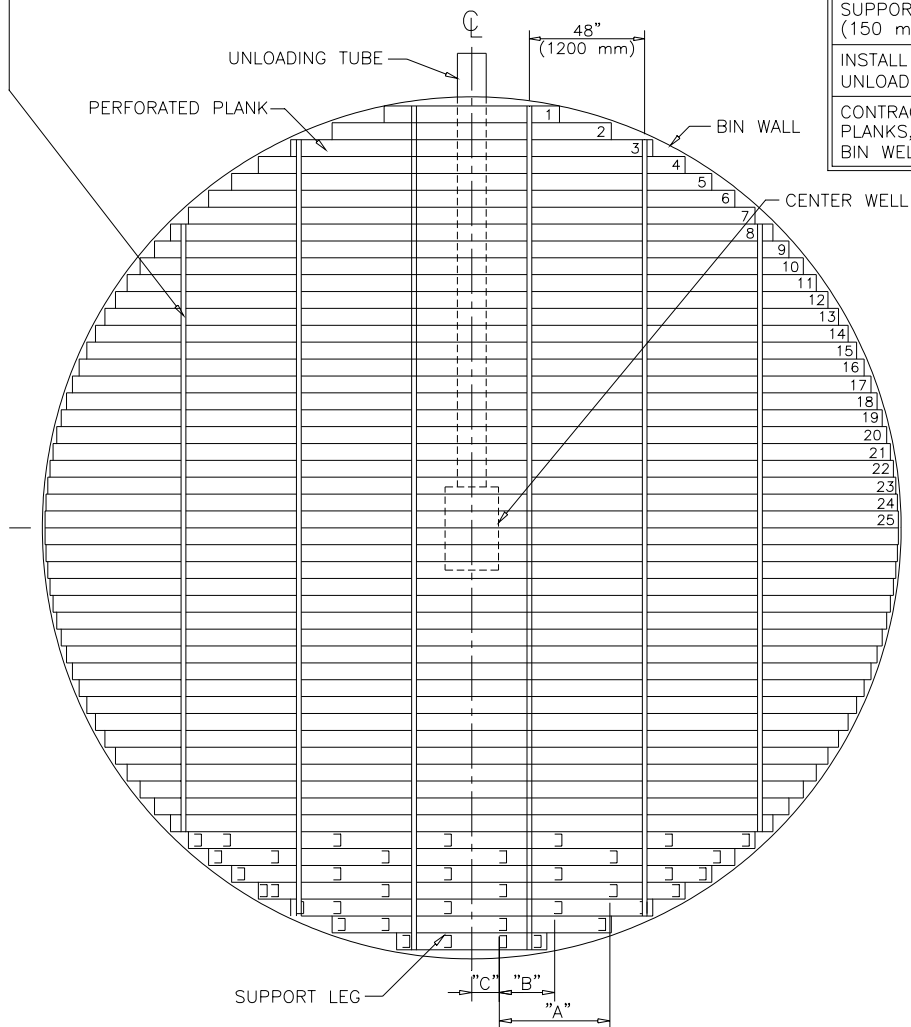
STAGGER LEGS IN EVERY OTHER ROW.

SEE LAYOUT AND TABLE A & B
FOR PROPER LEG SPACING.

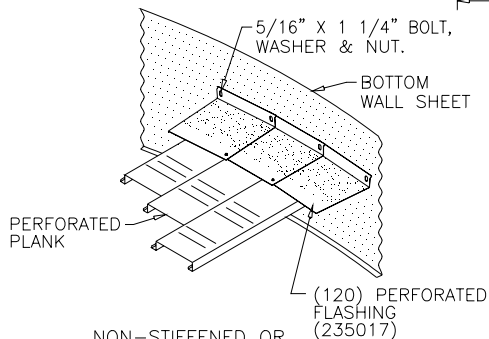
SUPPORT LEG NOT TO BE OVER 6"
(150 mm) FROM END OF ANY PLANK.

INSTALL PLANKS PERPENDICULAR TO
UNLOADING TUBE.

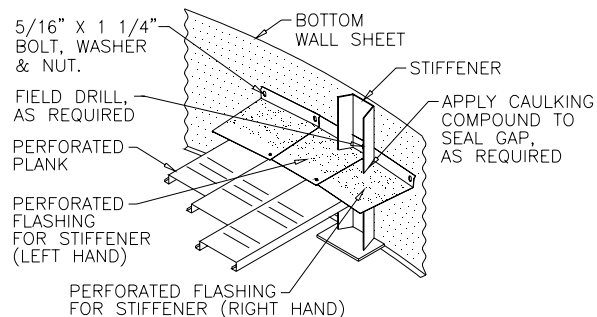
CONTRACTOR TO FIELD CUT PERFORATED
PLANKS, BUILD TRANSITION AROUND
BIN WELL AND SEAL AS REQUIRED.



SUPPORT LEG DETAIL
INSTALL SUPPORT LEGS ON
SPACINGS SHOWN IN TABLE B.



NON-STIFFENED OR
EXTERNALLY STIFFENED BIN



INTERNALLY STIFFENED BIN

FLASHING DETAIL

LAP FLASHING SAME DIRECTION AS SWEEP AUGER ROTATION.
CONNECT EACH FLASHING TO BIN WALL WITH 5/16" X 1 1/4"
(8 X 32 mm) BOLTS.
FASTEN FLASHING TO PLANK WITH #12-14 X 3/4" (19 mm)
SELF-DRILLING FASTENERS (ONE PER FLASHING).

30 FT (9.14 M) DIAMETER BIN

TABLE "A"

Plank No.	Plank Length		SUPPORT LEGS							
	(ft-in.)	(mm)								
1	6' 1"	1854	4	4	4	4	4	4	4	4
2	9' 8"	2946	4	4	4	4	4	5	5	5
3	12' 6"	3810	4	5	5	5	5	6	6	7
4	14' 9"	4496	5	5	5	6	6	6	7	8
5	16' 7"	5055	5	5	6	6	6	7	7	8
6	18' 3"	5563	6	6	6	7	7	7	8	9
7	19' 7"	5969	6	6	6	7	7	8	8	9
8	20' 10"	6350	6	6	7	7	8	8	9	10
9	22' 0"	6706	6	7	7	7	8	9	9	10
10	23' 0"	7010	7	7	7	8	8	9	9	11
11	23' 10"	7264	7	7	8	8	9	9	10	11
12	24' 8"	7518	7	7	8	8	9	9	10	11
13	25' 5"	7747	7	7	8	8	9	10	10	12
14	26' 1"	7950	7	8	8	9	9	10	10	12
15	26' 8"	8128	7	8	8	9	9	10	11	12
16	27' 2"	8280	7	8	8	9	10	10	11	13
17	27' 8"	8433	8	8	8	9	10	10	11	13
18	28' 1"	8560	8	8	9	9	10	11	11	13
19	28' 5"	8661	8	8	9	9	10	11	11	13
20	28' 9"	8763	8	8	9	9	10	11	11	13
21	29' 0"	8839	8	8	9	9	10	11	11	13
22	29' 3"	8915	10	10	11	11	12	13	13	15
23	29' 5"	8966	10	10	11	11	12	13	13	15
24	29' 6"	8992	10	10	11	11	12	13	14	15
25	29' 7"	9017	10	10	11	11	12	13	14	15
TOTALS (Includes both halves)			350	360	386	402	432	466	486	554
Bin Eave Height			17' 10"	21' 4"	24' 11"	32' 0"	40' 0"	48' 0"	57' 0"	64' 0"

TABLE "B"

Bin Eave Height		"A"		"B"		"C"		No. of 42-2/3" Rings
		(in.)	(mm)	(in.)	(mm)	(in.)	(mm)	
17' 10"	5.43 m	58	1473	29	737	14 1/2	368	5
21' 4"	6.50 m	54	1372	27	686	13 1/2	343	6
24' 11"	7.60 m	50	1270	25	635	12 1/2	318	7
32' 0"	9.75 m	46	1168	23	584	11 1/2	292	9
40' 0"	12.19 m	42	1067	21	533	10 1/2	267	11-1/3
48' 0"	14.63 m	38	965	19	483	9 1/2	241	13-1/2
57' 0"	17.37 m	36	914	18	457	9	229	16
64' 0"	19.51 m	30	762	15	381	7 1/2	191	18

33 FT (10.06 M) DIAMETER BIN

2" (50 mm) WIDE X 18GA PLAIN STRIP INSTALL AT 48" (1200 mm) O.C. PERPENDICULAR TO PLANKS. CONNECT TO EACH PLANK WITH #12-14 X 3/4" (19 mm) SELF-DRILLING FASTENER. (FOR BINS ABOVE 32 FT. (9.76 M) EAVE HEIGHT ONLY.)

NOTE:

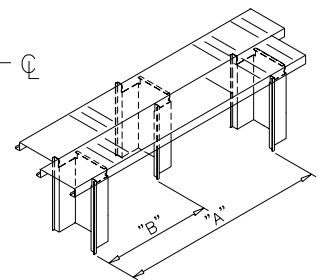
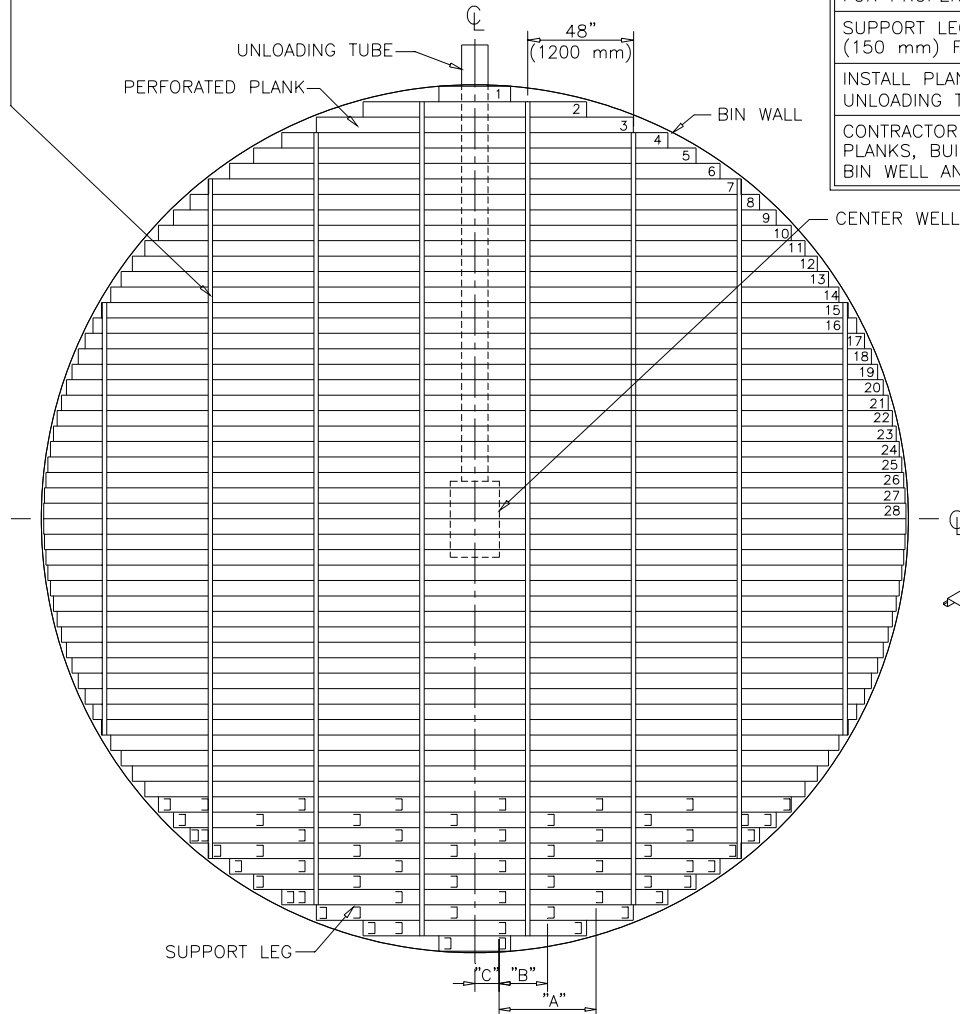
STAGGER LEGS IN EVERY OTHER ROW.

SEE LAYOUT AND TABLE A & B FOR PROPER LEG SPACING.

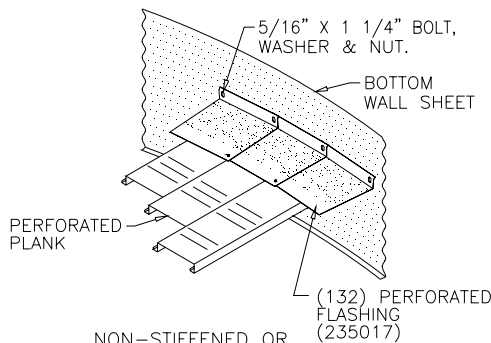
SUPPORT LEG NOT TO BE OVER 6" (150 mm) FROM END OF ANY PLANK.

INSTALL PLANKS PERPENDICULAR TO UNLOADING TUBE.

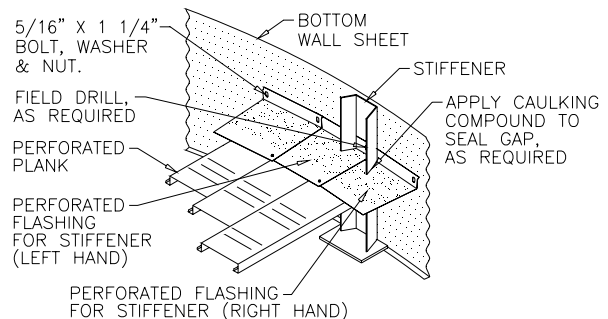
CONTRACTOR TO FIELD CUT PERFORATED PLANKS, BUILD TRANSITION AROUND BIN WELL AND SEAL AS REQUIRED.



SUPPORT LEG DETAIL
INSTALL SUPPORT LEGS ON SPACINGS SHOWN IN TABLE B.



NON-STIFFENED OR EXTERNALLY STIFFENED BIN



INTERNALLY STIFFENED BIN

FLASHING DETAIL

LAP FLASHING SAME DIRECTION AS SWEEP AUGER ROTATION. CONNECT EACH FLASHING TO BIN WALL WITH 5/16" X 1 1/4" (8 X 32 mm) BOLTS. FASTEN FLASHING TO PLANK WITH #12-14 X 3/4" (19 mm) SELF-DRILLING FASTENERS (ONE PER FLASHING).

33 FT (10.06 M) DIAMETER BIN

TABLE "A"

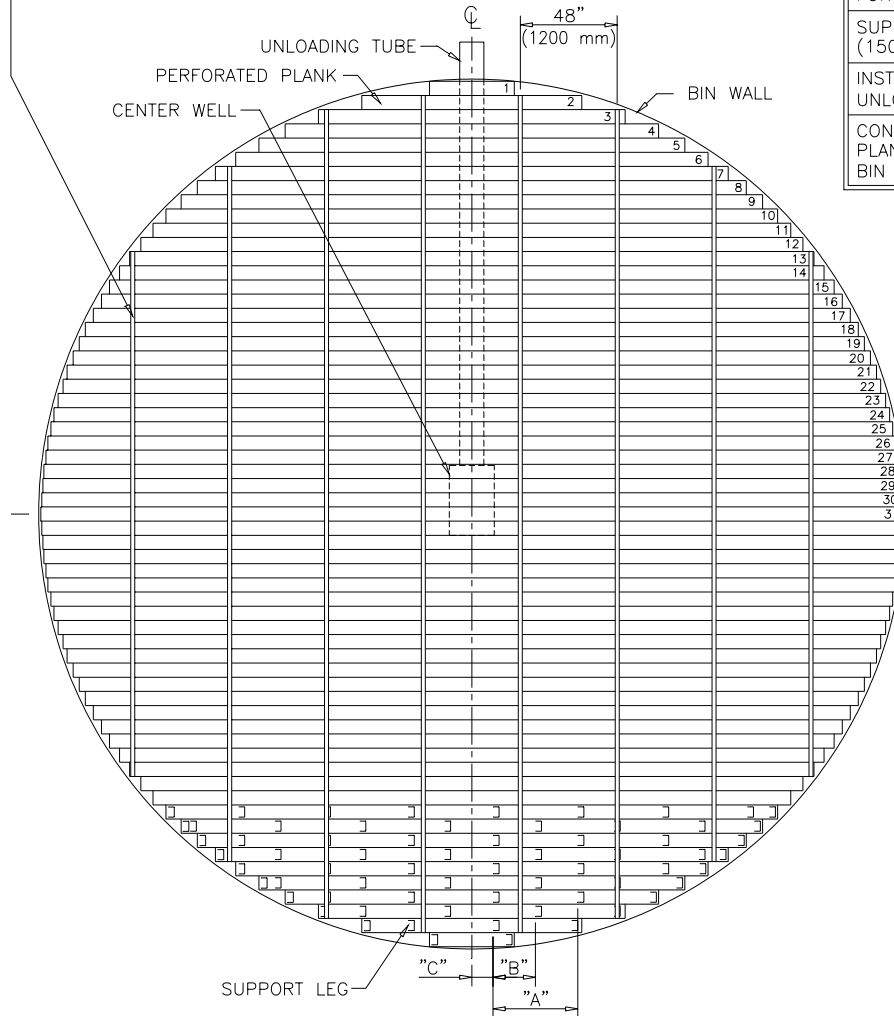
Plank No.	Plank Length		SUPPORT LEGS							
	(ft-in.)	(mm)								
1	2' 8"	813	2	2	2	2	2	2	2	2
2	8' 5"	2565	4	4	4	4	4	4	5	5
3	11' 11"	3632	4	5	5	5	5	6	6	6
4	14' 7"	4445	5	5	5	6	6	7	7	7
5	16' 8"	5080	5	6	6	6	7	7	8	8
6	18' 6"	5639	6	6	6	7	7	8	8	9
7	20' 1"	6121	6	6	7	7	8	8	9	10
8	21' 6"	6553	6	7	7	8	8	9	9	10
9	22' 9"	6934	7	7	7	8	9	9	10	11
10	23' 11"	7290	7	7	8	8	9	10	10	11
11	24' 11"	7595	7	8	8	9	9	10	10	12
12	25' 10"	7874	7	8	8	9	9	10	11	12
13	26' 8"	8128	8	8	8	9	10	11	11	12
14	27' 6"	8382	8	8	9	9	10	11	11	13
15	28' 2"	8585	8	8	9	9	10	11	12	13
16	28' 10"	8788	8	8	9	10	10	11	12	13
17	29' 5"	8966	8	9	9	10	11	11	12	13
18	29' 11"	9119	8	9	9	10	11	12	12	14
19	30' 5"	9271	8	9	9	10	11	12	12	14
20	30' 10"	9398	8	9	9	10	11	12	13	14
21	31' 2"	9500	8	9	10	10	11	12	13	14
22	31' 6"	9601	9	9	10	10	11	12	13	14
23	31' 10"	9703	9	9	10	10	11	12	13	14
24	32' 1"	9779	9	9	10	10	11	12	13	14
25	32' 3"	9830	11	11	12	13	13	14	15	17
26	32' 5"	9881	11	11	12	13	13	14	15	17
27	32' 6"	9906	11	11	12	13	13	15	15	17
28	32' 7"	9931	11	11	12	13	13	15	15	17
TOTALS (Includes both halves)			418	438	464	496	526	574	604	666
Bin Eave Height			17' 10"	21' 4"	24' 11"	32' 0"	40' 0"	48' 0"	57' 0"	64' 0"

TABLE "B"

Bin Eave Height		"A"		"B"		"C"		No. of 42-2/3" Rings
		(in.)	(mm)	(in.)	(mm)	(in.)	(mm)	
17' 10"	5.43 m	56	1422	28	711	14	356	5
21' 4"	6.50 m	52	1321	26	660	13	330	6
24' 11"	7.60 m	48	1219	24	610	12	305	7
32' 0"	9.75 m	44	1118	22	559	11	279	9
40' 0"	12.19 m	40	1016	20	508	10	254	11-1/3
48' 0"	14.63 m	36	914	18	457	9	229	13-1/2
57' 0"	17.37 m	34	864	17	432	8 1/2	216	16
64' 0"	19.51 m	30	762	15	381	7 1/2	191	18

36 FT (10.97 M) DIAMETER BIN

2" (50 mm) WIDE X 18GA PLAIN STRIP INSTALL AT 48" (1200 mm) O.C. PERPENDICULAR TO PLANKS. CONNECT TO EACH PLANK WITH #12-14 X 3/4" (19 mm) SELF-DRILLING FASTENER. (FOR BINS ABOVE 32 FT. (9.76 M) EAVE HEIGHT ONLY.)



NOTE:

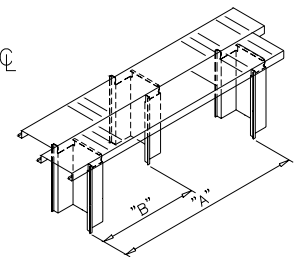
STAGGER LEGS IN EVERY OTHER ROW.

SEE LAYOUT AND TABLE A & B FOR PROPER LEG SPACING.

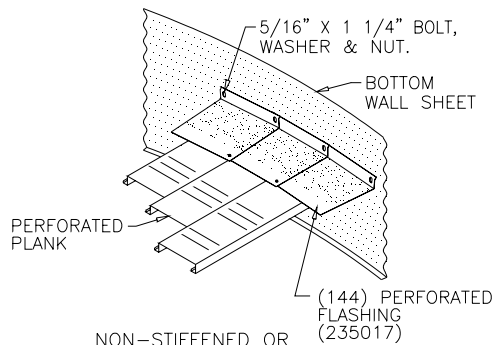
SUPPORT LEG NOT TO BE OVER 6" (150 mm) FROM END OF ANY PLANK.

INSTALL PLANKS PERPENDICULAR TO UNLOADING TUBE.

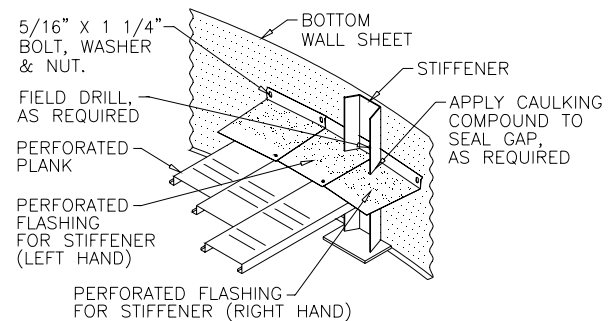
CONTRACTOR TO FIELD CUT PERFORATED PLANKS, BUILD TRANSITION AROUND BIN WELL AND SEAL AS REQUIRED.



SUPPORT LEG DETAIL
INSTALL SUPPORT LEGS ON SPACINGS SHOWN IN TABLE B.



NON-STIFFENED OR
EXTERNALLY STIFFENED BIN



INTERNALLY STIFFENED BIN

FLASHING DETAIL

LAP FLASHING SAME DIRECTION AS SWEEP AUGER ROTATION. CONNECT EACH FLASHING TO BIN WALL WITH 5/16" X 1 1/4" (8 X 32 mm) BOLTS. FASTEN FLASHING TO PLANK WITH #12-14 X 3/4" (19 mm) SELF-DRILLING FASTENERS (ONE PER FLASHING).

36 FT (10.97 M) DIAMETER BIN
TABLE "A"

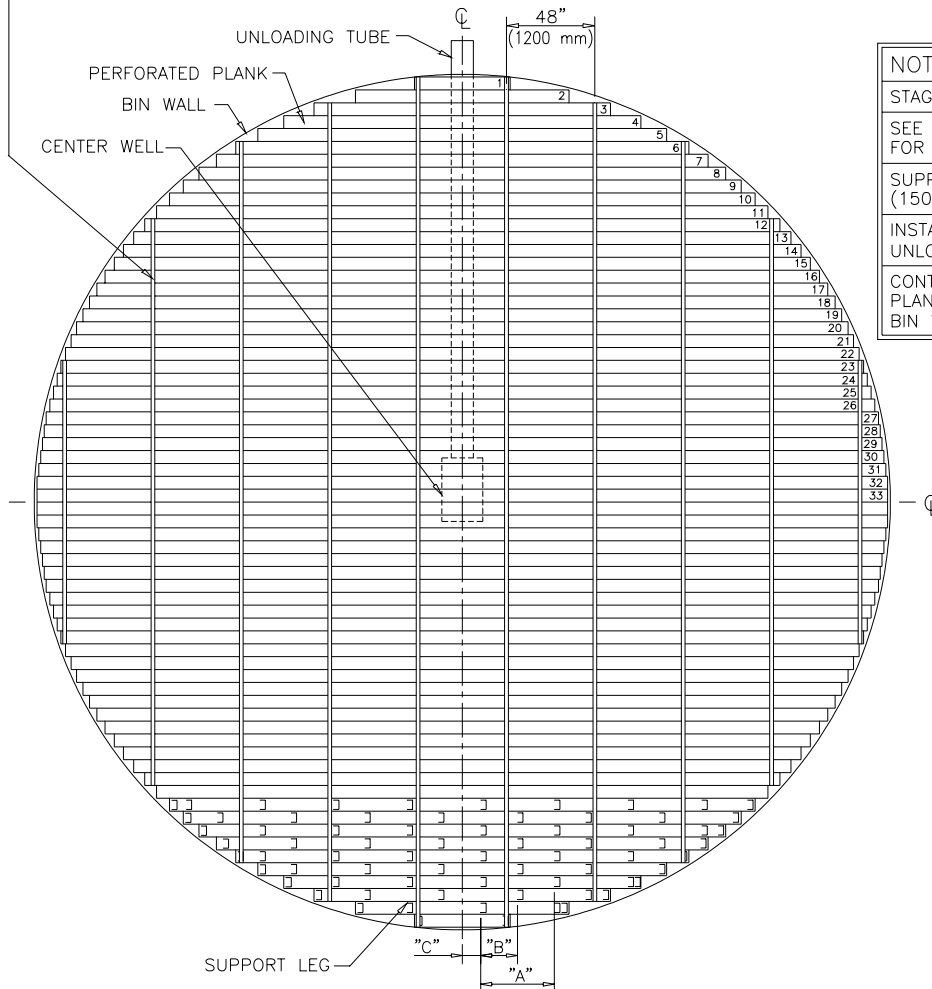
Plank No.	Plank Length		SUPPORT LEGS							
	(ft-in.)	(mm)								
1	3' 6"	1067	2	2	2	2	2	2	2	2
2	9' 1"	2769	4	4	4	4	4	5	5	5
3	12' 8"	3861	5	5	5	5	6	6	6	7
4	15' 5"	4699	5	5	6	6	6	7	7	8
5	17' 7"	5359	6	6	6	7	7	8	8	9
6	19' 6"	5944	6	6	7	7	8	8	9	9
7	21' 2"	6452	6	7	7	8	8	9	9	10
8	22' 8"	6909	7	7	8	8	9	9	10	11
9	24' 0"	7315	7	8	8	9	9	10	10	11
10	25' 3"	7696	7	8	8	9	9	10	11	12
11	26' 4"	8026	8	8	9	9	10	10	11	12
12	27' 4"	8331	8	8	9	10	10	11	11	13
13	28' 3"	8611	8	9	9	10	10	11	12	13
14	29' 1"	8865	8	9	9	10	10	11	12	13
15	29' 11"	9119	8	9	10	10	11	12	12	14
16	30' 7"	9322	9	9	10	10	11	12	12	14
17	31' 3"	9525	9	9	10	11	11	12	13	14
18	31' 11"	9728	9	9	10	11	11	12	13	14
19	32' 5"	9881	9	10	10	11	11	12	13	15
20	32' 11"	10033	9	10	10	11	12	13	13	15
21	33' 5"	10185	9	10	10	11	12	13	13	15
22	33' 9"	10287	9	10	11	11	12	13	14	15
23	34' 2"	10414	9	10	11	11	12	13	14	15
24	34' 6"	10516	9	10	11	12	12	13	14	15
25	34' 9"	10592	10	10	11	12	12	13	14	15
26	35' 0"	10668	10	10	11	12	12	13	14	16
27	35' 2"	10719	10	10	11	12	12	13	14	16
28	35' 4"	10770	12	12	13	14	14	15	16	18
29	35' 5"	10795	12	12	13	14	14	15	16	18
30	35' 6"	10820	12	12	13	14	14	16	16	18
31	35' 7"	10846	12	12	13	14	14	16	16	18
TOTALS (Includes both halves)			496	520	557	596	616	670	704	782
Bin Eave Height			17' 10"	21' 4"	24' 11"	32' 0"	40' 0"	48' 0"	57' 0"	64' 0"

TABLE "B"

Bin Eave Height		"A"		"B"		"C"		No. of 42-2/3" Rings
		(in.)	(mm)	(in.)	(mm)	(in.)	(mm)	
17' 10"	5.43 m	54	1372	27	686	13 1/2	343	5
21' 4"	6.50 m	50	1270	25	635	12 1/2	318	6
24' 11"	7.60 m	46	1168	23	584	11 1/2	292	7
32' 0"	9.75 m	42	1067	21	533	10 1/2	267	9
40' 0"	12.19 m	40	1016	20	508	10	254	11-1/3
48' 0"	14.63 m	36	914	18	457	9	229	13-1/2
57' 0"	17.37 m	34	864	17	432	8 1/2	216	16
64' 0"	19.51 m	30	762	15	381	7 1/2	191	18

39 FT (11.89 M) DIAMETER BIN

2" (50 mm) WIDE X 18GA PLAIN STRIP INSTALL AT 48" (1200 mm) O.C. PERPENDICULAR TO PLANKS. CONNECT TO EACH PLANK WITH #12-14 X 3/4" (19 mm) SELF-DRILLING FASTENER. (FOR BINS ABOVE 32 FT. (9.76 M) EAVE HEIGHT ONLY.)



NOTE:

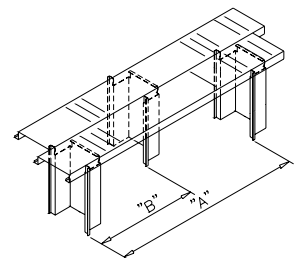
STAGGER LEGS IN EVERY OTHER ROW.

SEE LAYOUT AND TABLE A & B FOR PROPER LEG SPACING.

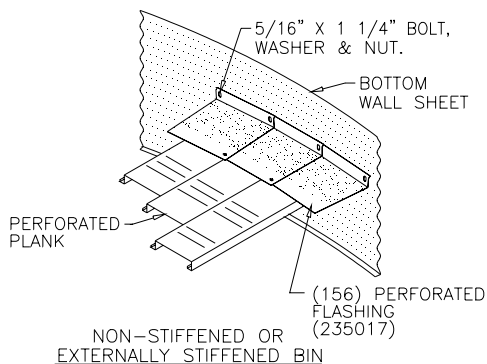
SUPPORT LEG NOT TO BE OVER 6" (150 mm) FROM END OF ANY PLANK.

INSTALL PLANKS PERPENDICULAR TO UNLOADING TUBE.

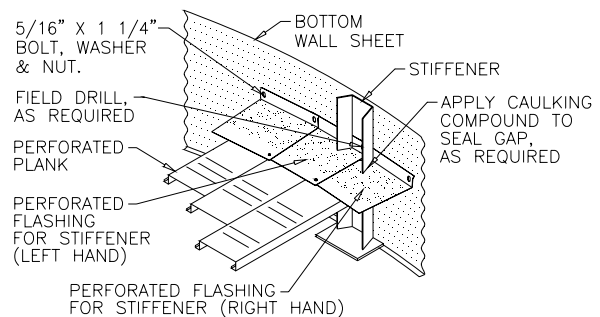
CONTRACTOR TO FIELD CUT PERFORATED PLANKS, BUILD TRANSITION AROUND BIN WELL AND SEAL AS REQUIRED.



SUPPORT LEG DETAIL
INSTALL SUPPORT LEGS ON SPACINGS SHOWN IN TABLE B.



NON-STIFFENED OR EXTERNALLY STIFFENED BIN



INTERNALLY STIFFENED BIN

FLASHING DETAIL

LAP FLASHING SAME DIRECTION AS SWEEP AUGER ROTATION. CONNECT EACH FLASHING TO BIN WALL WITH 5/16" X 1 1/4" (8 X 32 mm) BOLTS. FASTEN FLASHING TO PLANK WITH #12-14 X 3/4" (19 mm) SELF-DRILLING FASTENERS (ONE PER FLASHING).

39 FT (11.89 M) DIAMETER BIN

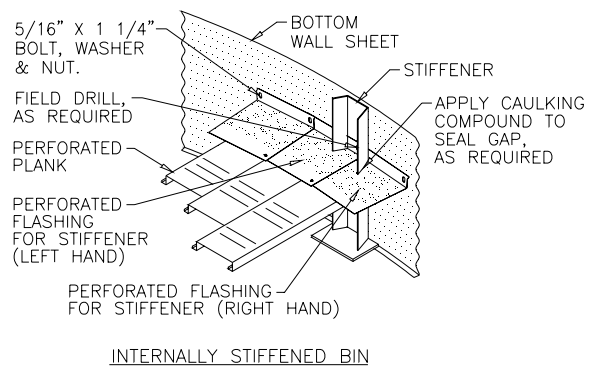
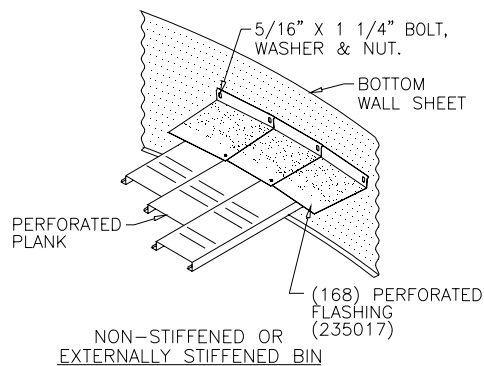
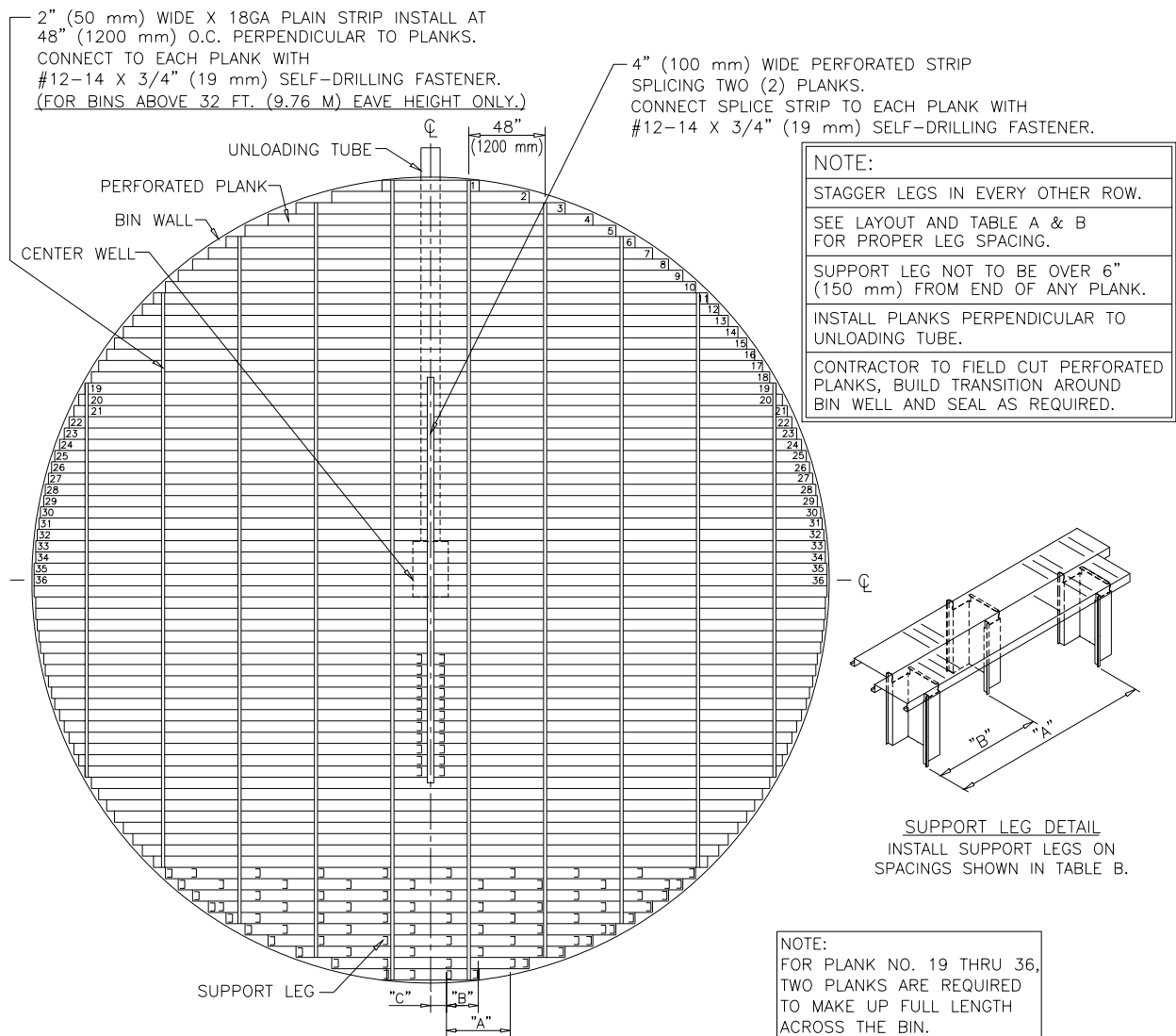
TABLE "A"

Plank No.	Plank Length		SUPPORT LEGS							
	(ft-in.)	(mm)								
1	4' 4"	1321	2	2	2	2	4	4	4	4
2	9' 8"	2946	4	4	4	5	5	5	5	5
3	13' 5"	4089	5	5	5	6	6	6	6	7
4	16' 2"	4928	6	6	6	7	7	7	7	8
5	18' 6"	5639	6	6	7	7	8	8	8	9
6	20' 6"	6248	7	7	7	8	8	9	9	10
7	22' 3"	6782	7	7	8	8	9	9	10	11
8	23' 10"	7264	7	8	8	9	9	10	10	11
9	25' 3"	7696	8	8	9	9	10	10	11	12
10	26' 6"	8077	8	8	9	10	10	11	11	12
11	27' 8"	8433	8	9	9	10	10	11	11	13
12	28' 9"	8763	8	9	10	10	11	11	12	13
13	29' 9"	9068	9	9	10	11	11	12	12	14
14	30' 8"	9347	9	9	10	11	11	12	12	14
15	31' 6"	9601	9	10	10	11	12	12	13	14
16	32' 4"	9855	9	10	11	11	12	12	13	15
17	33' 1"	10084	9	10	11	12	12	13	13	15
18	33' 9"	10287	10	10	11	12	12	13	14	15
19	34' 4"	10465	10	10	11	12	13	13	14	15
20	34' 11"	10643	10	10	11	12	13	13	14	16
21	35' 5"	10795	10	11	11	12	13	13	14	16
22	35' 11"	10947	10	11	12	12	13	14	14	16
23	36' 4"	11074	10	11	12	13	13	14	14	16
24	36' 9"	11201	10	11	12	13	13	14	15	16
25	37' 1"	11303	10	11	12	13	13	14	15	16
26	37' 5"	11405	10	11	12	13	14	14	15	17
27	37' 8"	11481	10	11	12	13	14	14	15	17
28	37' 11"	11557	11	11	12	13	14	14	15	17
29	38' 1"	11608	11	11	12	13	14	14	15	17
30	38' 3"	11659	13	13	14	15	16	16	17	19
31	38' 5"	11709	13	13	14	15	16	16	17	19
32	38' 6"	11735	13	13	14	15	16	17	17	19
33	38' 6"	11735	13	13	14	15	16	17	17	19
TOTALS (Includes both halves)			590	616	664	716	756	784	818	914
Bin Eave Height			17' 10"	21' 4"	24' 11"	32' 0"	40' 0"	48' 0"	57' 0"	64' 0"

TABLE "B"

Bin Eave Height		"A"		"B"		"C"		No. of 42-2/3" Rings
		(in.)	(mm)	(in.)	(mm)	(in.)	(mm)	
17' 10"	5.43 m	52	1321	26	660	13	330	5
21' 4"	6.50 m	48	1219	24	610	12	305	6
24' 11"	7.60 m	44	1118	22	559	11	279	7
32' 0"	9.75 m	40	1016	20	508	10	254	9
40' 0"	12.19 m	38	965	19	483	9 1/2	241	11-1/3
48' 0"	14.63 m	36	914	18	457	9	229	13-1/2
57' 0"	17.37 m	34	864	17	432	8 1/2	216	16
64' 0"	19.51 m	30	762	15	381	7 1/2	191	18

42 FT (12.80 M) DIAMETER BIN



FLASHING DETAIL

LAP FLASHING SAME DIRECTION AS SWEEP AUGER ROTATION.
(8 X 32 mm) BOLTS.
CONNECT EACH FLASHING TO BIN WALL WITH 5/16" X 1 1/4" FASTEN FLASHING TO PLANK WITH #12-14 X 3/4" (19 mm) SELF-DRILLING FASTENERS (ONE PER FLASHING).



42 FT (12.80 M) DIAMETER BIN

TABLE "A"

Plank No.	Plank Length		SUPPORT LEGS							
	(ft-in.)	(mm)								
1	5' 1"	1549	2	4	4	4	4	4	4	4
2	10' 4"	3150	4	4	5	5	5	5	5	6
3	14' 1"	4293	5	5	6	6	6	6	7	7
4	17' 0"	5182	6	6	6	7	7	7	8	8
5	19' 5"	5918	6	7	7	8	8	8	9	9
6	21' 5"	6528	7	7	8	8	8	9	9	10
7	23' 3"	7087	7	8	8	9	9	9	10	11
8	24' 11"	7595	8	8	9	9	10	10	10	12
9	26' 5"	8052	8	8	9	10	10	10	11	12
10	27' 9"	8458	8	9	9	10	10	11	11	13
11	29' 0"	8839	8	9	10	10	11	11	12	13
12	30' 2"	9195	9	9	10	11	11	12	12	14
13	31' 2"	9500	9	10	10	11	12	12	13	14
14	32' 2"	9804	9	10	11	11	12	12	13	15
15	33' 1"	10084	9	10	11	12	12	13	13	15
16	33' 11"	10338	10	10	11	12	12	13	14	15
17	34' 9"	10592	10	10	11	12	13	13	14	16
18	35' 6"	10820	10	11	11	12	13	14	14	16
19	18' 1"	5512	12	13	14	15	15	16	16	18
20	18' 5"	5613	12	13	14	15	15	16	17	18
21	18' 8"	5690	12	13	14	15	16	16	17	19
22	18' 11"	5766	13	13	14	15	16	16	17	19
23	19' 2"	5842	13	13	14	15	16	16	17	19
24	19' 5"	5918	13	13	14	15	16	17	17	19
25	19' 8"	5994	13	14	14	16	16	17	18	19
26	19' 10"	6045	13	14	15	16	16	17	18	19
27	20' 0"	6096	13	14	15	16	16	17	18	20
28	20' 2"	6147	13	14	15	16	16	17	18	20
29	20' 3"	6172	13	14	15	16	17	17	18	20
30	20' 5"	6223	13	14	15	16	17	17	18	20
31	20' 6"	6248	13	14	15	16	17	17	18	20
32	20' 7"	6274	13	14	15	16	17	17	18	20
33	20' 8"	6299	13	14	15	16	17	17	18	20
34	20' 8"	6299	13	14	15	16	17	17	18	20
35	20' 9"	6325	13	14	15	16	17	18	18	20
36	20' 9"	6325	13	14	15	16	17	18	18	20
TOTALS (Includes both halves)			719	768	823	882	917	946	994	1,100
Bin Eave Height			17' 10"	21' 4"	24' 11"	32' 0"	40' 0"	48' 0"	57' 0"	64' 0"

*Two planks required to make up full length across bin. Cover plank splice with 4" (100 mm) wide perforated strip and connect with #12-14 x 3/4" (19 mm) self-drilling fastener.

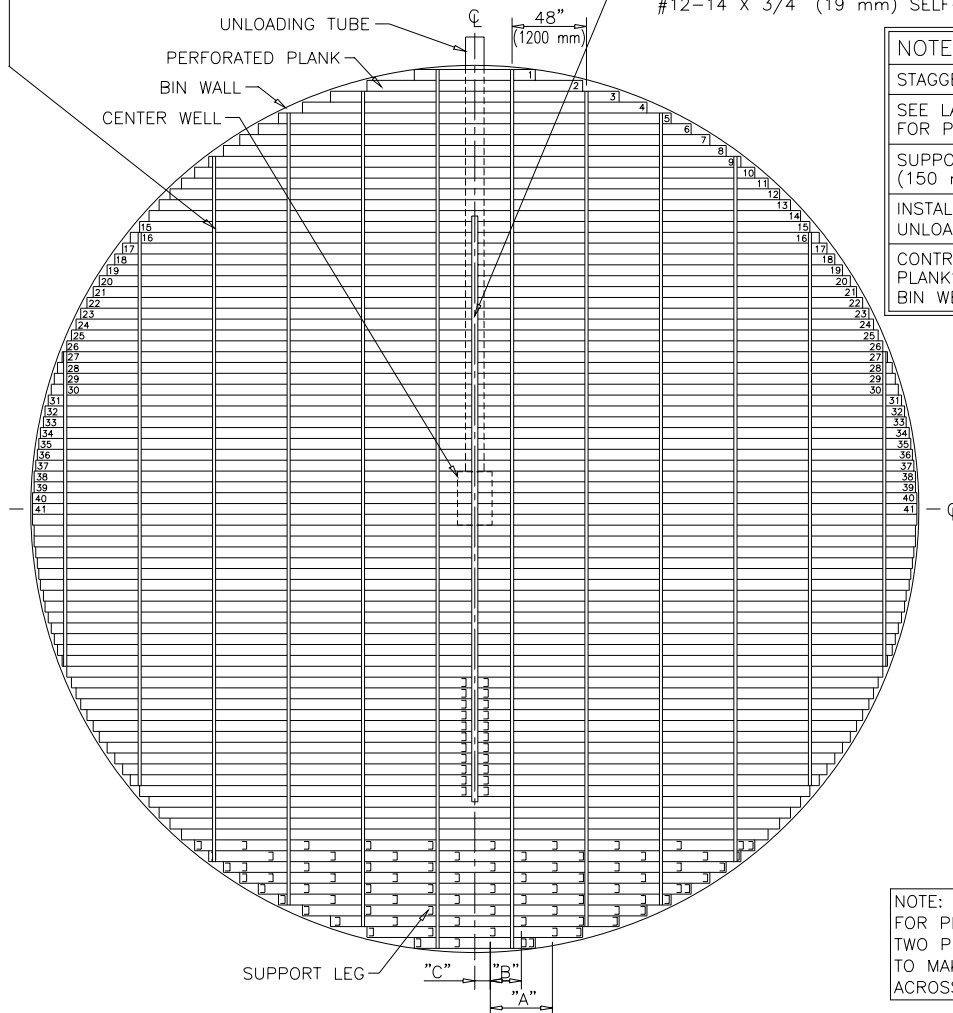
TABLE "B"

Bin Eave Height		"A"		"B"		"C"		No. of 42-2/3" Rings
		(in.)	(mm)	(in.)	(mm)	(in.)	(mm)	
17' 10"	5.43 m	52	1321	26	660	13	330	5
21' 4"	6.50 m	48	1219	24	610	12	305	6
24' 11"	7.60 m	44	1118	22	559	11	279	7
32' 0"	9.75 m	40	1016	20	508	10	254	9
40' 0"	12.19 m	38	965	19	483	9 1/2	241	11-1/3
48' 0"	14.63 m	36	914	18	457	9	229	13-1/2
57' 0"	17.37 m	34	864	17	432	8 1/2	216	16
64' 0"	19.51 m	30	762	15	381	7 1/2	191	18

48 FT (14.63 M) DIAMETER BIN

2" (50 mm) WIDE X 18GA PLAIN STRIP INSTALL AT 48" (1200 mm) O.C. PERPENDICULAR TO PLANKS. CONNECT TO EACH PLANK WITH #12-14 X 3/4" (19 mm) SELF-DRILLING FASTENER. (FOR BINS ABOVE 32 FT. (9.76 M) EAVE HEIGHT ONLY.)

4" (100 mm) WIDE PERFORATED STRIP SPLICING TWO (2) PLANKS. CONNECT SPLICE STRIP TO EACH PLANK WITH #12-14 X 3/4" (19 mm) SELF-DRILLING FASTENER.



NOTE:

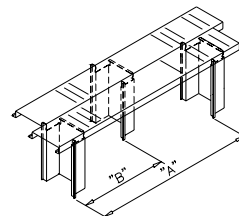
STAGGER LEGS IN EVERY OTHER ROW.

SEE LAYOUT AND TABLE A & B FOR PROPER LEG SPACING.

SUPPORT LEG NOT TO BE OVER 6" (150 mm) FROM END OF ANY PLANK.

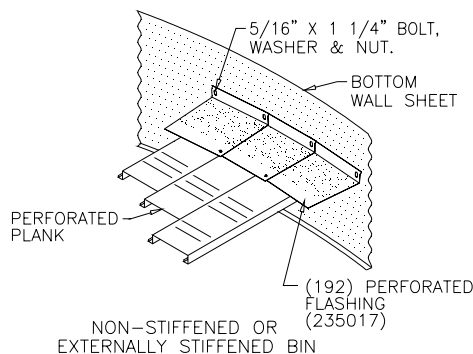
INSTALL PLANKS PERPENDICULAR TO UNLOADING TUBE.

CONTRACTOR TO FIELD CUT PERFORATED PLANKS, BUILD TRANSITION AROUND BIN WELL AND SEAL AS REQUIRED.

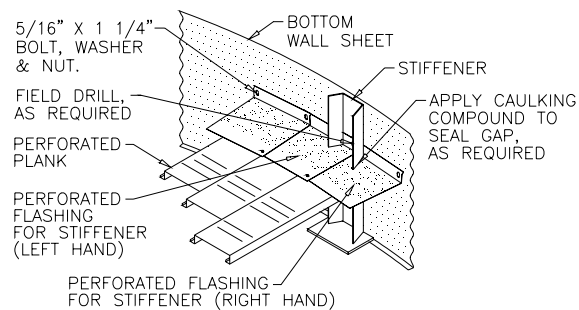


SUPPORT LEG DETAIL
INSTALL SUPPORT LEGS ON SPACINGS SHOWN IN TABLE B.

NOTE:
FOR PLANK NO. 15 THRU 41, TWO PLANKS ARE REQUIRED TO MAKE UP FULL LENGTH ACROSS THE BIN.



NON-STIFFENED OR
EXTERNALLY STIFFENED BIN



INTERNALLY STIFFENED BIN

FLASHING DETAIL

LAP FLASHING SAME DIRECTION AS SWEEP AUGER ROTATION. (8 X 32 mm) BOLTS. CONNECT EACH FLASHING TO BIN WALL WITH 5/16" X 1 1/4" FASTEN FLASHING TO PLANK WITH #12-14 X 3/4" (19 mm) SELF-DRILLING FASTENERS (ONE PER FLASHING).

48 FT (14.63 M) DIAMETER BIN

TABLE "A"

Plank No.	Plank Length		SUPPORT LEGS							
	(ft-in.)	(mm)								
1	6' 6"	1981	4	4	4	4	4	4	4	4
2	11' 7"	3531	4	5	5	5	6	6	6	6
3	15' 6"	4724	5	6	6	6	7	7	7	8
4	18' 6"	5639	6	6	7	7	8	8	9	9
5	21' 1"	6426	7	7	7	8	9	9	10	10
6	23' 3"	7087	7	8	8	9	9	10	10	11
7	25' 3"	7696	8	8	9	9	10	11	11	12
8	27' 0"	8230	8	9	9	10	11	11	12	12
9	28' 7"	8712	8	9	10	10	11	12	12	13
10	30' 1"	9169	9	9	10	11	12	12	13	14
11	31' 6"	9601	9	10	10	11	12	13	13	14
12	32' 9"	9982	9	10	11	12	13	13	14	15
13	33' 11"	10338	10	10	11	12	13	14	14	15
14	35' 0"	10668	10	11	11	12	13	14	15	16
15	18' 0"	5486	12	13	14	15	16	16	17	18
16	18' 6"	5639	12	13	14	15	16	17	18	18
17	18' 11"	5766	13	13	14	15	16	17	18	19
18	19' 4"	5893	13	13	14	15	17	17	18	19
19	19' 9"	6020	13	14	15	16	17	18	19	19
20	20' 2"	6147	13	14	15	16	17	18	19	20
21	20' 6"	6248	13	14	15	16	17	18	19	20
22	20' 10"	6350	13	14	15	16	18	18	19	20
23	21' 2"	6452	14	14	15	16	18	19	20	21
24	21' 5"	6528	14	14	15	17	18	19	20	21
25	21' 8"	6604	14	15	16	17	18	19	20	21
26	21' 11"	6680	14	15	16	17	18	19	20	21
27	22' 2"	6756	14	15	16	17	18	19	20	21
28	22' 5"	6833	14	15	16	17	19	19	20	22
29	22' 7"	6883	14	15	16	17	19	20	21	22
30	22' 9"	6934	14	15	16	17	19	20	21	22
31	22' 11"	6985	14	15	16	17	19	20	21	22
32	23' 1"	7036	14	15	16	18	19	20	21	22
33	23' 2"	7061	15	15	16	18	19	20	21	22
34	23' 4"	7112	15	15	16	18	19	20	21	22
35	23' 5"	7137	15	15	17	18	19	20	21	22
36	23' 6"	7163	15	16	17	18	19	20	21	22
37	23' 7"	7188	15	16	17	18	19	20	21	23
38	23' 8"	7214	15	16	17	18	19	20	21	23
39	23' 8"	7214	15	16	17	18	20	20	21	23
40	23' 9"	7239	15	16	17	18	20	20	21	23
41	23' 9"	7239	15	16	17	18	20	20	21	23
TOTALS (Includes both halves)			947	1,002	1,069	1,146	1,242	1,294	1,359	1,437
Bin Eave Height			17' 10"	21' 4"	24' 11"	32' 0"	40' 0"	48' 0"	57' 0"	64' 0"

*Two planks required to make up full length across bin. Cover plank splice with 4" (100 mm) wide perforated strip and connect with #12-14 x 3/4" (19 mm) self-drilling fastener.

TABLE "B"

Bin Eave Height		"A"		"B"		"C"		No. of 42-2/3" Rings
		(in.)	(mm)	(in.)	(mm)	(in.)	(mm)	
17' 10"	5.43 m	52	1321	26	660	13	330	5
21' 4"	6.50 m	48	1219	24	610	12	305	6
24' 11"	7.60 m	44	1118	22	559	11	279	7
32' 0"	9.75 m	40	1016	20	508	10	254	9
40' 0"	12.19 m	36	914	18	457	9	229	11-1/3
48' 0"	14.63 m	34	864	17	432	8 1/2	216	13-1/2
57' 0"	17.37 m	32	813	16	406	8	203	16
64' 0"	19.51 m	30	762	15	381	7 1/2	191	18



SCAFCO Grain Systems Company

6200 E. Main Avenue

PO Box 11215

Spokane, WA 99211-1215, USA